

**Municipality of Shuniah
Designated Substance Survey
McTavish Recreation Centre, Pearl, ON**



Prepared by:
True Grit Consulting Ltd.
1127 Barton Street
Thunder Bay, ON P7B 5N3
T: 807.626.5640 Ext. 258
F: 807.623.5690
Project Number: 09-040-06A
Contact: Ina Chomyshyn H.B.Sc., CIH,ROH

This report has been prepared by True Grit Consulting Ltd. ("TGCL") for the benefit of the client to whom it is addressed. The information and data contained herein represent TGCL's best professional judgment in light of the knowledge and information available to TGCL at the time of preparation. Except as required by law, this report and the information and data contained herein are to be treated as confidential and may be used and relied upon only by the client, its officers and employees. TGCL denies any liability whatsoever to other parties who may obtain access to this report for any injury, loss or damage suffered by such parties arising from their use of, or reliance upon, this report or any of its contents without the express written consent of TGCL and the client.

December 22, 2009

Executive Summary

True Grit Consulting Limited (TGCL) was retained by the Municipality of Shuniah to complete a Designated Substance Survey (DSS) of the McTavish Recreation Centre located in Pearl, Ontario. The purpose of the work was to identify designated substances and/or hazardous materials present within the building proposed for demolition.

Fieldwork was completed on September 30, 2009 and consisted of a visual assessment and a site investigation for the presence of asbestos, lead, mercury, polychlorinated biphenyls (PCB) and hazardous contents.

Asbestos is present in three types of building materials: joint compound limited to the old construction portion of the building, vinyl floor tile (VFT) located in Room 4, Room 5 and Room 8, and the pipe insulation located in Room 18, as numbered for this study. The asbestos containing (AC) pipe insulation may continue within the inaccessible areas beneath the building.

The surface coatings in the interior and on the exterior of the older construction are lead based paints, specifically Rooms 9, 10, 11, 12, 13, 14, 15, 16, 17, 18 and the exterior trim that surrounds the entire building (new and old construction).

Mercury was found to be present in two wall-mounted thermostats.

Some of the fluorescent lamp ballasts may contain PCB.

Toxic and flammable products in the form of household cleaners, a possible Freon containing freezer and fridge unit, and a fuel oil tank used for heating were observed.

Based on this DSS, TGCL directs the following recommendations to the Municipality as the owner of the building:

- Transmit the information contained in this report to the prospective bidders on the demolition project as required by the Occupational Health and Safety Act of Ontario.
- Ensure compliance with the Environmental Protection Act of Ontario and local municipal landfill regulations with respect to disposal of:
 - building materials containing asbestos or lead based paint, and
 - mercury-containing items including thermostats and fluorescent lamps.
- Prior to demolition of the recreation centre remove fluorescent light fixtures, examine and sort the ballasts and ensure appropriate disposal.
- Prior to demolition of the building remove all toxic and flammable contents.

Table of Contents

Executive Summary	i
1.0 Introduction	1
1.1 Background	1
1.2 Scope of Work.....	1
2.0 Methodology.....	2
2.1 Inspection	2
2.2 Asbestos	2
2.3 Lead	3
2.4 Mercury	3
2.5 PCB	3
2.6 Hazardous Contents	3
3.0 Results	4
3.1 General Building Overview.....	4
3.2 Asbestos	4
3.2.1 Asbestos Containing Materials	4
3.2.2 Non Asbestos-Containing Materials.....	5
3.3 Lead	6
3.4 Mercury	6
3.5 PCB	6
3.6 Hazardous Contents	6
4.0 Discussion	7
4.1 Asbestos	7
4.2 Lead	7
4.3 Mercury	7
4.4 PCB	8
4.5 Hazardous Contents	8
5.0 Conclusions.....	9
6.0 Recommendations.....	10
7.0 Closure	11

Figures

Figure 1 – Basement Sampling Plan
Figure 2 – Main Floor Sampling Plan

Appendices

Appendix A: Photographs
Appendix B: Field Data Sheets
Appendix C: Laboratory Certificates of Analysis

1.0 Introduction

True Grit Consulting Limited (TGCL) was retained by the Municipality of Shuniah (hereinafter referred to as the Municipality) to complete a Designated Substance Survey (DSS) of the McTavish Recreation Centre located in Pearl, Ontario.

The DSS was required prior to the proposed demolition of the building.

1.1 Background

The building is of pre-1960's construction and appears to be an old school house that was later converted to a recreation centre. The building is currently vacant.

1.2 Scope of Work

The scope of work for this assignment consisted of the identification of designated substances and hazardous materials in the recreation centre. Designated Substance regulations have been made for the following eleven substances under the Occupational Health and Safety Act of Ontario:

- Acrylonitrile
- Arsenic
- Asbestos
- Benzene
- Coke Oven Emissions
- Ethylene Oxide
- Isocyanates
- Lead
- Mercury
- Silica
- Vinyl Chloride

Given the construction of the building and the nature of operations carried out at the facility, only three designated substances, asbestos, lead and mercury, were considered for investigation. Silica is likely present in the concrete in the building's foundation. Formal inclusion of silica into the survey, beyond this statement, is not necessary. Other hazardous materials that could be present in the building include polychlorinated biphenyls (PCB) and toxic or flammable contents or workplace materials.

The project involved a thorough inspection of the buildings to identify building materials and to collect samples of suspected designated substances or hazardous materials. Materials suspected to contain asbestos were sampled in accordance with the requirements of Ontario Regulation 278/05 made under the Occupational Health and Safety Act *Designated Substance – Asbestos on Construction Projects and in Buildings and Repair Operations* with respect to numbers of samples. Samples were analyzed at qualified laboratories. This report was prepared to document the DSS.

2.0 Methodology

2.1 Inspection

TGCL inspected all accessible areas of the building (interior and exterior) on September 30, 2009. The inspection involved a methodical visual assessment of all accessible areas of every room and space in the building for building materials that could contain asbestos, lead, mercury or PCB, or for hazardous contents.

2.2 Asbestos

Where materials suspected to contain asbestos were identified, bulk samples of the materials were collected. Where appropriate, prior to sampling suspected friable ACMs, the investigator donned a negative pressure half-mask respirator equipped with high efficiency particulate air (HEPA) filter cartridges. Prior to disturbance, the area or material to be sampled was sprayed with a detergent and water solution (i.e. amended water) to minimize the generation of dust during sampling.

A sample of the suspected material was collected by cutting through all layers of the material to the underlying substrate using appropriate tools, such as a retractable knife, pliers or tin snips. Friable materials were regularly misted with amended water during sampling to ensure the material remained wet and to minimize the generation of airborne dust.

Each collected sample was immediately placed in a new zip-lock plastic sample bag and labelled with a unique sample identifier. The location of each sample was recorded on building floor plans (Figure 1 and Figure 2) and details of the sample (i.e. location, quantity, condition, friability, physical properties, etc) were recorded on field survey forms for each room or distinct area (Appendix B). The number of samples of each building material followed the requirements of Table 1 of O.Reg. 278/05 for each identified functional space, as follows:

Material	Size of Homogenous Area	Min. # of Samples
Surfacing Material applied by spraying or trowelling (i.e. acoustical ceiling plaster, fireproofing, etc)	<90 m ²	3
	>90 m ² but <450 m ²	5
	>450 m ²	7
Thermal Insulation	Unlimited	3
Thermal Insulation Patch	< 2 m or <0.5 m ²	1
Other	Unlimited	3

Each group of samples for any one homogenous material was labelled using a distinct sample number followed by the letters a, b or c, identifying the multiple representative samples collected for each material. Following sample collection, a qualitative assessment of the friability of the material was made. Where the material was considered capable of being crumbled or crushed with hand pressure, the material was identified as friable. All other materials were considered non-friable. The quantity of suspected ACM was determined either by direct measurement using a measuring tape or measuring wheel or by using measurements that were part of the drawings and floor plans provided by the building owner.

The samples were shipped under chain of custody to International Asbestos Testing Laboratories (IATL) or to TGCL's hazardous materials laboratory for analysis of bulk asbestos via Polarized Light Microscopy (PLM) following the U.S. Environmental Protection Agency Test Method EPA/600/R-93/116: *Method for the Determination of Asbestos in Bulk Building Materials*, June 1993. The detection limit stated by IATL for this method is 0.25%. Where samples consisted of more than one distinct layer (i.e. vinyl floor tile, paper-type backing, mastic, etc), each layer was analyzed and reported separately.

O. Reg. 278/05 stipulates that any bulk material containing 0.5% or more asbestos is to be considered asbestos-containing. TGCL considers homogenous materials to be asbestos-containing where at least one sample in a group, collected and labelled as described above, is found to contain 0.5% or more asbestos, despite any negative results which may have been obtained for any other samples within the same sample group.

2.3 Lead

For every painted surface tested, paint chip samples were collected by peeling by hand where possible or by scraping the painted surfaces with a retractable knife, taking care to include all layers of paint while minimizing the amount of substrate (wood, concrete or metal) collected and to avoid cross contamination. Each sample was placed in a new zip-lock plastic bag and labelled with a distinct sample identifier and tested in the field using LeadCheck® swabs.

Solder is known to contain lead and older piping may contain lead. Piping and solder were not sampled.

2.4 Mercury

Wall-mounted thermostats were examined to determine whether any contained mercury.

Fluorescent light tubes are known to contain mercury vapour; sampling is not possible without destruction of the lamp and is not required.

2.5 PCB

Fluorescent lamp ballasts are known in some cases to contain PCB. Ballasts in the building were not examined for the possible presence of PCB since there was no safe method to remove the ballast cover from the fixtures.

2.6 Hazardous Contents

In each room a cursory inspection was made to identify the presence of toxic or flammable contents.

3.0 Results

Representative photographs are provided in Appendix A. Floor plans showing the locations where building material samples were collected are provided as Figure 1 and Figure 2. The field data sheets in Appendix B provide supplementary documentation of the review and give details of samples collected.

3.1 General Building Overview

The subject building consists of a main floor and a basement made up of wood framing and a concrete block foundation having a footprint of approximately 3,400 square feet. An addition was noted to the rear of the original building and is included in the total square footage. The year of construction of the original building and addition are unknown, but both sections are assumed to be pre-1960.

The exterior walls consist of red brick and the roof is composed of asphalt shingles. Painted wood is present on the trim all around the edge of the roof, windows and sills. A small rectangular wood vestibule with an asphalt shingle roof is located at the person door at the front of the building. Exterior illumination is provided by a non-fluorescent type of lamp.

The interior building finishes in the main floor and basement consist of the following:

- Basement: poured concrete floor (painted), concrete block and an unfinished wood ceiling.
- Main floor: painted wood/plaster and sheetrock walls; vinyl sheet flooring (VSF), vinyl floor tile (VFT), ceramic tile floor; stucco and tile ceilings.

The interior doors are non-painted wood and the exterior doors consist of painted metal. Insulation observed within the walls and ceilings in the building consists of fibreglass. Air cell type insulation was present on the hot water piping system. Interior illumination is provided by a mixture of fluorescent light fixtures and non-fluorescent type of lamps.

The building appears to be originally heated with a boiler and later with a fuel oil furnace.

3.2 Asbestos

The laboratory certificates are provided in Appendix C. Asbestos was detected in three of the samples.

3.2.1 Asbestos Containing Materials

The following materials were found to contain asbestos:

Material	Description	Location	Type and Percent (%) Asbestos
Joint compound	Off-white, wall, friable	Main recreation room, Room 9	1-10% % chrysotile
Vinyl floor tile	Cream/Brown/Gold, pattern, 12x12, non-friable	Washroom, Room 4 (Room 5, and Room 8, visually similar)	1-10% chrysotile
Pipe insulation	Grey Air cell pipe insulation, friable	Room 18, Boiler Room.	50-75% chrysotile.

Notes: Room numbers as they appear on Figure 1 and Figure 2.

3.2.2 Non Asbestos-Containing Materials

The following building materials do not contain asbestos:

Table 2 Summary of Non Asbestos-Containing Materials			
Material	Description	Location	Sampled and Analyzed (A) or Visual Assessment (V)
Joint compound	White, wall	South stairwell, Room 2	A
Joint compound	White, wall	Lounge, Room 6	A
Ceiling texture	White	Hallway, Room 7	A
Floor tile	Tan, 12x12	Main recreation room, Room 9	A
Mastic	Black, back of 12x12 tan floor tile	Main recreation room, Room 9	A
Plaster	Grey, wall	Main recreation room, Room 9/ Hallway, Room 17	A
Sheet rock	White/Tan, wall	Main recreation room, Room 9/ Hallway, Room 17	A
Counter tile	Tan/Black, window sill	Main recreation room, Room 9	A
Mastic	Brown, window sill	Main recreation room, Room 9	A
Floor tile	Blue, 9x9, non-friable	Tuck shop, Room 11	A
Mastic	Brown, back of blue 9x9 tile	Tuck shop, Room 11	A
Floor tile	Off-white, 9x9	Tuck shop, Room 11	A
Mastic	Brown, back of off-white 9x9 tile	Tuck shop, Room 11	A
Mastic	Brown, rubber baseboard	Tuck shop, Room 11	A
Chalk board	Black/Green/Tan	Storage room, Room 15	A
Mastic	Clear, backing of green rubber mat	Vestibule, Room 16	A
Ceramic Tile	Brown, floor	Hallway, Room 17	A
Mastic	Tan, back of ceramic floor tile	Hallway, Room 17	A
Shingle	Grey/Black, older side	Exterior	A
Shingle	Green/Black, newer side	Exterior	A
Parging	Grey between cement blocks	Basement and Room 2.	A
Mortar	Light grey between bricks	Older portion of building, Room 6	A
Ceiling tile	White and brown, 12x12	Room 9 and Room 11.	V
Paper vapour barrier	Brown, between insulation and ceiling	Room 18 and presumed within the older portion of building	V
Mortar	Light grey between bricks	Newer portion of building, Exterior.	A

Notes: Room numbers as they appear on Figure 1 and Figure 2.

3.3 Lead

Thirteen (13) different painted surfaces were tested for lead using a filed screening method. The results of the LeadCheck® analysis for the tested surfaces are summarized in Table 4 below. Materials that tested positive for lead are shown in bold text.

Table 3 Summary of Painted Surfaces Tested			
Location	Surface	Paint Colour [sample number]	Lead Present: Yes (Y)/ No (N)
Room 1	Floor, Concrete	Grey [LC-1]	N
Room 4	Sheet rock	White [LC-2]	N
Room 9	Plaster	Light brown [LC-3]	Y
Room 9	Plaster	Cream [LC-4]	Y
Room 12	Floor, Concrete	Light grey [LC-5]	Y
Room 12	Plaster	Turquoise [LC-6]	Y
Room 13	Plaster	Speckled, white, brown, grey [LC-7]	N
Room 14	Plaster	Speckled, yellow and white [LC-8]	N
Room 17	Plaster	Yellow [LC-9]	Y
Room 17	Plaster	Grey/Black [LC-10]	Y
Room 17	Ceramic tile	Clear coat on brown ceramic tile [LC-11]	N
Exterior window sills (New and Old Section)	Wood	Cream [LC-12]	Y
Room 6	Floor, Wood	White [LC-13]	N
Notes: Y=Yes, contains lead. N=No, does not contain lead. Room numbers as they appear on Figure 1 and Figure 2.			

3.4 Mercury

Two wall-mounted thermostats were identified as mercury-switch thermostats, each containing a small ampoule of liquid mercury.

Since fluorescent lamps contain mercury, mercury is considered to be present in the lighting fixtures in the building. Thirty fluorescent lights were identified within the building.

3.5 PCB

Older fluorescent lamp ballasts that contain PCB can be identified by markings on the ballast. Thirty ballasts were observed during the inspection. None of the ballasts were examined as there was no safe method to remove the ballast cover from the housing.

3.6 Hazardous Contents

Hazardous materials observed to be present in the building consist of some household cleaners located in the janitor's closet in Room 10, a freezer located in Room 8 and a fridge located in Room 17 that may contain Freon and a fuel oil tank in the basement that appears to be empty but may contain residual fuel oil.

4.0 Discussion

4.1 Asbestos

In Ontario, asbestos is regulated by Ontario Regulations (O.Reg.) 278/05 *Designated Substance – Asbestos on Construction Projects and in Buildings and Repair Operations* and O.Reg. 837/90 *Designated Substance – Asbestos* made under the Occupational Health and Safety Act. By definition, asbestos-containing materials (ACM) are those materials containing 0.5% or more asbestos. ACM must be removed from buildings prior to demolition.

ACM was found in three different building materials within the recreation centre: the drywall compound in the older section of the building, the vinyl floor tile in room 4, room 5 and room 8, and the pipe insulation in the boiler room.

4.2 Lead

Lead was used as an additive in paints until it was banned by the Government of Canada in 1978. Older painted surfaces can often contain high concentrations of lead. Paints containing more than 600 parts per million (ppm) lead are considered to be lead-based paints in accordance with the Hazardous Products Act (HPA) of Canada. The Ontario Ministry of Labour provides direction on handling lead-based paints during construction or renovation projects in its document *Guideline – Lead on Construction Projects (2004)*. Demolition of building materials containing lead-based paint requires that the materials be sampled and analyzed to determine if the waste materials are considered hazardous in accordance with the requirements of Ontario Regulation 347 (O.Reg. 347) made under the Environmental Protection Act.

O. Reg 347 requires proponents to test waste materials that may contain hazardous chemicals in concentrations exceeding limits published in Schedule 4 of the regulation to assess whether or not the waste is considered hazardous. The approved test is a toxicity characteristic leachate procedure (TCLP). If the contaminant concentrations in the leachate exceed the Schedule 4 leachate criteria, the waste material would be considered hazardous and transportation by a licensed hazardous waste carrier to a licensed hazardous waste disposal facility would be required. Most disposal facilities, including municipal landfill sites, require proof of testing prior to accepting building materials containing lead-based paint.

Lead was detected in seven of the thirteen painted surfaces tested. Painted surfaces that are visually identical to the tested surfaces are considered to be the same paint.

Based on the results and visual assessment, all painted surfaces on the older construction of the building should be considered to be lead based paint. Rooms 9, 10, 11, 12, 13, 14, 15, 16, 17, 18 and the exterior trim that surrounds the entire building are considered to be part of the older construction.

A reasonable approach for ensuring appropriate disposal is segregation of lead-painted building materials and holding them for disposal until the required test results are available.

4.3 Mercury

Mercury is present in two of the wall-mounted thermostats observed. The disposal of mercury-containing thermostats is not currently regulated; however, they should not be disposed at municipal landfills and there are facilities available that will collect and recycle them.

Mercury vapour and fluorescent lamps in lighting systems also contain mercury that can be released when the lights are broken. Although disposal of these lighting fixtures is not currently regulated, facilities for recycling and proper disposal exist. Thirty lighting systems containing fluorescent lamps were identified.

4.4 PCB

Ontario Regulation *Waste Management PCBs* (O.Reg. 362) made under the Environmental Protection Act governs the handling and disposal of PCB waste in Ontario. There is currently no requirement to remove PCB-containing fluorescent lamp ballasts from service. However, when light fixtures are removed and disposed, the ballasts should be examined and categorized as PCB (and likely PCB) or non-PCB containing using the Environment Canada guidance document *Identification of Lamp Ballasts Containing PCBs*, dated 1991 with Appendix C updated May 2000. Most ballasts manufactured after 1980 do not contain PCB. All PCB-containing ballasts and those deemed likely to contain PCB would be required to be drummed for disposal and shipped by a licensed carrier to a certified PCB destruction facility. Disposal of all PCB-containing ballasts is required by December 2025.

Approximately thirty fluorescent lamp ballasts were observed within the building. It would be prudent to make a final determination by evaluating each ballast after it is removed from the building or deem all ballasts to be PCB-containing.

4.5 Hazardous Contents

For the protection of workers involved in the building demolition hazardous material must be removed prior to demolition, and either relocated or disposed of appropriately.

5.0 Conclusions

Based on the results of the DSS, the following conclusions are presented:

- Asbestos is present in three types of building materials: joint compound limited to the old construction portion of the building, VFT located in Room 4, Room 5 and Room 8, and the pipe insulation located in Room 18. The AC pipe insulation may continue within the inaccessible areas beneath the building.
- Lead is present in 7 paint coatings tested. Since we assume that all visually identical paint are the same, deem all the paint in the interior and exterior of the older construction, specifically Rooms 9, 10, 11, 12, 13, 14, 15, 16, 17, 18 and the exterior trim that surrounds the entire building (new and old construction) to be lead based.
- Mercury is present in two thermostats and in fluorescent light bulbs in the recreation centre.
- Some of the fluorescent lamp ballasts in the building may contain PCB.
- The hazardous building contents include a limited amount of household cleaners, a freezer and fridge that possibly contain Freon and a fuel tank that may contain residual amounts of fuel oil.

6.0 Recommendations

The following recommendations are provided to the Municipality:

- Transmit the information contained in this report to the prospective bidders on the demolition project as required by the Occupational Health and Safety Act of Ontario.
- Ensure compliance with the Environmental Protection Act of Ontario and local municipal landfill regulations with respect to disposal of:
 - building materials containing asbestos or lead based paint, and
 - mercury-containing items including thermostats and fluorescent lamps.
- Prior to demolition of the recreation centre, remove fluorescent light fixtures, examine and sort the ballasts and ensure appropriate disposal.
- Prior to demolition of the building, remove all toxic and flammable contents.

7.0 Closure

The information and data contained in this report, including without limitation, the results of any sampling and analyses conducted by TGCL pursuant to its Agreement with the Client, have been developed or obtained through the exercise of TGCL's professional judgment and are set forth to the best of TGCL's knowledge, information and belief. Although every effort has been made to confirm that this information is factual, complete and accurate, TGCL makes no guarantees or warranties whatsoever, whether express or implied, with respect to such information or data.

The information and data presented in this report are based on the purpose and scope of the project and form the basis for any conclusions and recommendations presented herein. Any conclusions and recommendations presented herein do not preclude the existence of environmental concerns other than those that may have been identified.

Work performed by TGCL personnel employed sound environmental assessment principles. TGCL cannot guarantee the accuracy and reliability of information provided by others or third parties. Therefore, TGCL does not claim responsibility for undisclosed environmental concerns or conditions that may result in costs for environmental clean-up and/or remediation. This report is intended for information purposes only.

Respectfully submitted by:

TRUE GRIT CONSULTING LTD.



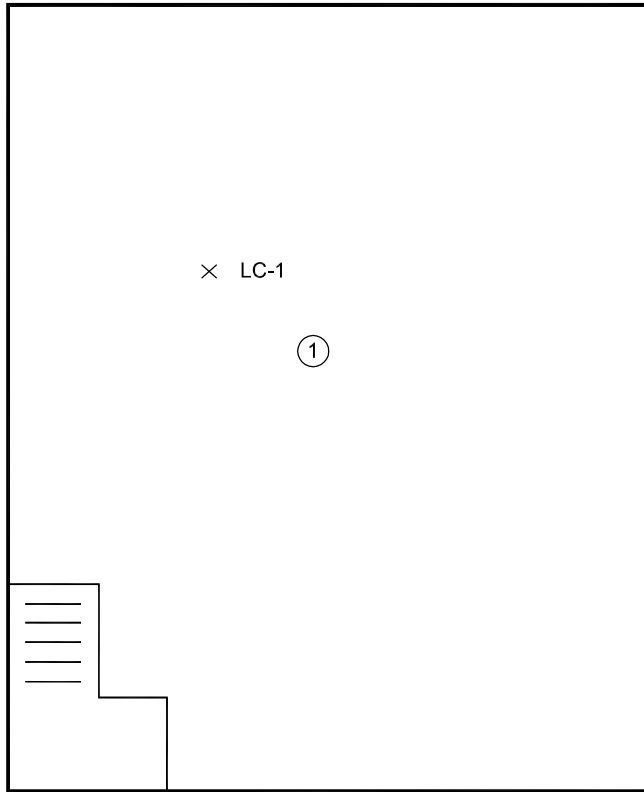
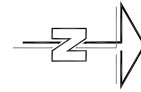
Melanie Gauthier
Environmental Technician
mgauthier@tgcl.ca



Ina Chomyshyn, H.B.Sc., CIH, ROH
Director, Industrial Hygiene Services
ina@tgcl.ca

IC/MG:mg

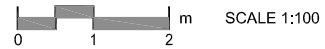
Figures



LEGEND

- × LC-1 Lead Check Sample
- ① Room Number

Layout



File No. 09-040-06A

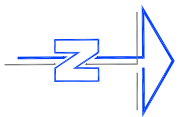
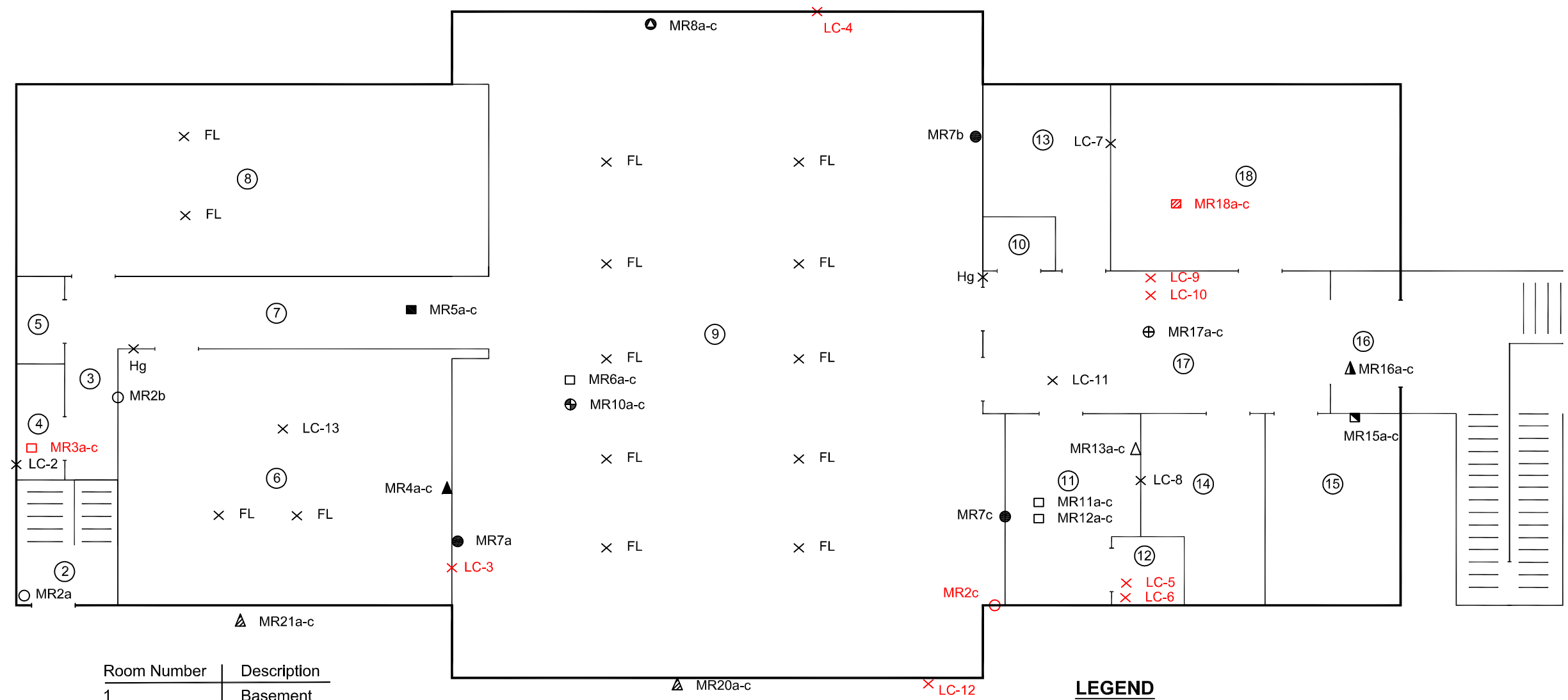
Municipality of Shuniah
Designated Substance Survey
McTavish Recreation Centre, Pearl, ON



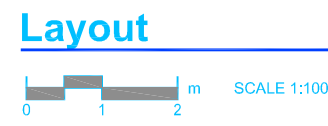
Designed By: MS
Approved By: IC
Date: Sept 30, 2009

Basement Sampling Plan

FIGURE 1



Room Number	Description
1	Basement
2	South Stairwell
3	Corridor 1
4	Washroom
5	Closet
6	Lounge
7	Corridor 2
8	Kitchen
9	Main Recreation
10	Janitor Closet
11	Tuck Shop
12	Washroom
13	Boy's Washroom
14	Girl's Washroom
15	Storage
16	Vestibule
17	Corridor 3
18	Furnace Room



LEGEND

□ MR3a-c	Vinyl Floor Tile
○ MR2a-c	Drywall Mud Joint Compound
⊕ MR17a-c	Ceramic Brick Tile
⊕ MR10a-c	Ceiling Tile
● MR8a-c	Vinyl Counter Top
△ MR13a-c	Cove Base Mastic
▲ MR20a-c	Roofing Shingles
▲ MR16a-c	Vinyl Mat
■ MR15a-c	Blackboard Backing
▨ MR18a-c	Thermal System Insulation
■ MR5a-c	Textured Ceiling
▲ MR4a-c	Parging
● MR7a-c	Plaster
○ MR2c	Asbestos Containing Sample
× LC-1	Lead Check Sample
× LC-1	Lead Containing Sample
× Hg	Mercury Thermostats
× FL	Fluorescent Lighting
①	Room Number

Municipality of Shuniah
 Designated Substance Survey
 McTavish Rec Centre, Pearl, ON

**Appendix A:
Photographs**



Photo 1: Basement, 900 L fuel tank in NE corner. Appears to be empty.



Photo 2: Room No.8, AC floor tile and possible freon containing freezer.



Photo 3: Room No. 18, AC air cell pipe insulation. Approximately 20 linear meters and 2 elbows. Unknown if it continues under building.



Photo 4: Room No. 18, AC air cell pipe insulation referenced in in the previous photo.



**Photo 5: Room No. 9, AC mud joint compound (MJC) in the original building.
Deem all MJC in this portion of the building to contain asbestos.**



Photo 6: Exterior looking NW, older construction to the right and newer construction to the left. .

**Appendix B:
Field Data Sheets**

BUILDING HAZARDOUS MATERIALS SURVEY FORM



Building Information

Facility	McTavish Recreation Centre
Building I.D.	McTavish Recreation Centre
Floor	Basement
Room I.D.	Room 1

Project Information

Project #:	09-040-06A
Client:	Municipality of Shuniah
Date:	Wednesday, September 30, 2009
Assessor:	Mike Stachejczuk and Melanie Gauthier

LOCATION		TYPE OF MATERIAL ²								Comments	QTY	FRIABILITY ³		CONDITION ⁴				PFD ⁵		
Sample ID	Surface ¹	TSI (Pipe)	TSI (Other)	VSF	VFT	MJC	Drywall	CT	Other			F	NF	E	G	F	P	C	V	A
	C								X			Open ceiling, wood joists (8' ceilings).								
	W								X	Concrete block, grey, may contain silica.								L	L	L
MR1 (a-c)	W								X	Parging, light grey between concrete blocks, determined not to contain asbestos.		X			X			M	L	L
LC-1	F								X	Painted concrete, grey (Stairwell, Room No.2, painted same as floor in Room No. 1).			X			X		H	M	L
										Copper piping present (NW corner).						X				
										No fluorescent lights present.										
										Fuel oil tank, appears to be empty (NE corner).						X				

- Notes:
1. C = ceiling; W = Wall; F = Floor; P = Piping; V = vessel; O = Other
 2. TSI = thermal system insulation; VSF = vinyl sheet flooring; VFT = vinyl floor tile; MJC = mud joint compound; CT = ceiling tile
 3. F = friable; NF = non-friable
 4. E = excellent (no damage); G = good (<10% damage); F = fair (<25% damage); P = poor (>25% damage)
 5. C = contact/accessible; V = vibration; A = air erosion. Use H = high; M = moderate; L = low.

BUILDING HAZARDOUS MATERIALS SURVEY FORM



Building Information

Facility	McTavish Recreation Centre
Building I.D.	McTavish Recreation Centre
Floor	Main
Room I.D.	Room 2, South Stairwell

Project Information

Project #:	09-040-06A
Client:	Municipality of Shuniah
Date:	Wednesday, September 30, 2009
Assessor:	Mike Stachejczuk and Melanie Gauthier

LOCATION		TYPE OF MATERIAL ²								Comments	QTY	FRIABILITY ³		CONDITION ⁴				PFD ⁵		
Sample ID	Surface ¹	TSI (Pipe)	TSI (Other)	VSF	VFT	MJC	Drywall	CT	Other			F	NF	E	G	F	P	C	V	A
	F								X			Wooden, painted grey, same paint as basement floor (LC-1).		X			X		L	L
	W						X			Painted white (same as LC-2), 8' height, top portion of wall.		X			X		L	L	L	
	W								X	Concrete block, 2' height (bottom), may contain silica.		X		X			I	L	L	
MR2a	W					X				White	X			X			M	L	L	
	C						X			Painted white (same as LC-2), 10' ceiling, no texture.		X		X			L	L	L	
										No fluorescent lights present.										

- Notes:
1. C = ceiling; W = Wall; F = Floor; P = Piping; V = vessel; O = Other
 2. TSI = thermal system insulation; VSF = vinyl sheet flooring; VFT = vinyl floor tile; MJC = mud joint compound; CT = ceiling tile
 3. F = friable; NF = non-friable
 4. E = excellent (no damage); G = good (<10% damage); F = fair (<25% damage); P = poor (>25% damage)
 5. C = contact/accessible; V = vibration; A = air erosion. Use H = high; M = moderate; L = low.

BUILDING HAZARDOUS MATERIALS SURVEY FORM



Building Information

Facility	McTavish Recreation Centre
Building I.D.	McTavish Recreation Centre
Floor	Main
Room I.D.	Room 2, South Stairwell

Project Information

Project #:	09-040-06A
Client:	Municipality of Shuniah
Date:	Wednesday, September 30, 2009
Assessor:	Mike Stachejczuk and Melanie Gauthier

LOCATION		TYPE OF MATERIAL ²									Comments	QTY	FRIABILITY ³		CONDITION ⁴				PFD ⁵		
Sample ID	Surface ¹	TSI (Pipe)	TSI (Other)	VSF	VFT	MJC	Drywall	CT	Other	F			NF	E	G	F	P	C	V	A	
	F								X	Wooden, painted grey, same paint as basement floor (LC-1).						X				L	L
	W						X			Painted white (same as LC-2), 8' height, top portion of wall.				X				L	L	L	
	W								X	Concrete block, 2' height (bottom), may contain silica.				X				I	L	L	
MR2a	W					X				White		X			X			M	L	L	
	C						X			Painted white (same as LC-2), 10' ceiling, no texture.				X		X		L	L	L	
										No fluorescent lights present.											

- Notes:
- C = ceiling; W = Wall; F = Floor; P = Piping; V = vessel; O = Other
 - TSI = thermal system insulation; VSF = vinyl sheet flooring; VFT = vinyl floor tile; MJC = mud joint compound; CT = ceiling tile
 - F = friable; NF = non-friable
 - E = excellent (no damage); G = good (<10% damage); F = fair (<25% damage); P = poor (>25% damage)
 - C = contact/accessible; V = vibration; A = air erosion. Use H = high; M = moderate; L = low.

BUILDING HAZARDOUS MATERIALS SURVEY FORM



Building Information

Facility: McTavish Recreation Centre
Building I.D.: McTavish Recreation Centre
Floor: Main
Room I.D.: Room 3, Corridor 1

Project Information

Project #: 09-040-06A
Client: Municipality of Shuniah
Date: Wednesday, September 30, 2009
Assessor: Mike Stachejczuk and Melanie Gauthier

Main survey table with columns: LOCATION (Sample ID, Surface), TYPE OF MATERIAL (TSI, VSF, VFT, MJC, Drywall, CT, Other), Comments, QTY, FRIABILITY (F, NF), CONDITION (E, G, F, P), and PFD (C, V, A). Contains data for wooden floor, painted wall, and ceiling.

- Notes: 1. C = ceiling; W = Wall; F = Floor; P = Piping; V = vessel; O = Other
2. TSI = thermal system insulation; VSF = vinyl sheet flooring; VFT = vinyl floor tile; MJC = mud joint compound; CT = ceiling tile
3. F = friable; NF = non-friable
4. E = excellent (no damage); G = good (<10% damage); F = fair (<25% damage); P = poor (>25% damage)
5. C = contact/accessible; V = vibration; A = air erosion. Use H = high; M = moderate; L = low.

BUILDING HAZARDOUS MATERIALS SURVEY FORM



Building Information

Facility	McTavish Recreation Centre
Building I.D.	McTavish Recreation Centre
Floor	Main
Room I.D.	Room 4, Washroom

Project Information

Project #:	09-040-06A
Client:	Municipality of Shuniah
Date:	Wednesday, September 30, 2009
Assessor:	Mike Stachejczuk and Melanie Gauthier

LOCATION		TYPE OF MATERIAL ²								Comments	QTY	FRIABILITY ³		CONDITION ⁴				PFD ⁵					
Sample ID	Surface ¹	TSI (Pipe)	TSI (Other)	VSF	VFT	MJC	Drywall	CT	Other			F	NF	E	G	F	P	C	V	A			
MR3 (a-c)	F				X							12"x12" ,cream,brown, gold, pattern, on wood floor. Contains Asbestos.	2.5 m ²		X			X			L	L	L
LC-2	W						X			White paint.		X				X			L	L	L		
	C						X			Painted white (LC-2), no texture, 8' ceiling.		X				X			L	L	L		
										No fluorescent lights present.													

- Notes:
- C = ceiling; W = Wall; F = Floor; P = Piping; V = vessel; O = Other
 - TSI = thermal system insulation; VSF = vinyl sheet flooring; VFT = vinyl floor tile; MJC = mud joint compound; CT = ceiling tile
 - F = friable; NF = non-friable
 - E = excellent (no damage); G = good (<10% damage); F = fair (<25% damage); P = poor (>25% damage)
 - C = contact/accessible; V = vibration; A = air erosion. Use H = high; M = moderate; L = low.

BUILDING HAZARDOUS MATERIALS SURVEY FORM



Building Information

Facility	McTavish Recreation Centre
Building I.D.	McTavish Recreation Centre
Floor	Main
Room I.D.	Room 5, Closet

Project Information

Project #:	09-040-06A
Client:	Municipality of Shuniah
Date:	Wednesday, September 30, 2009
Assessor:	Mike Stachejczuk and Melanie Gauthier

LOCATION		TYPE OF MATERIAL ²								Comments	QTY	FRIABILITY ³		CONDITION ⁴				PFD ⁵				
Sample ID	Surface ¹	TSI (Pipe)	TSI (Other)	VSF	VFT	MJC	Drywall	CT	Other			F	NF	E	G	F	P	C	V	A		
	C						X								X				X			L
	W						X						X							L	L	L
	F				X									X				X		M	L	L

- Notes:
1. C = ceiling; W = Wall; F = Floor; P = Piping; V = vessel; O = Other
 2. TSI = thermal system insulation; VSF = vinyl sheet flooring; VFT = vinyl floor tile; MJC = mud joint compound; CT = ceiling tile
 3. F = friable; NF = non-friable
 4. E = excellent (no damage); G = good (<10% damage); F = fair (<25% damage); P = poor (>25% damage)
 5. C = contact/accessible; V = vibration; A = air erosion. Use H = high; M = moderate; L = low.

BUILDING HAZARDOUS MATERIALS SURVEY FORM



Building Information

Facility	McTavish Recreation Centre
Building I.D.	McTavish Recreation Centre
Floor	Main
Room I.D.	Room 6, Lounge

Project Information

Project #:	09-040-06A
Client:	Municipality of Shuniah
Date:	Wednesday, September 30, 2009
Assessor:	Mike Stachejczuk and Melanie Gauthier

LOCATION		TYPE OF MATERIAL ²								Comments	QTY	FRIABILITY ³		CONDITION ⁴				PFD ⁵		
Sample ID	Surface ¹	TSI (Pipe)	TSI (Other)	VSF	VFT	MJC	Drywall	CT	Other			F	NF	E	G	F	P	C	V	A
LC-13	F								X			Wood floor painted white (white wash finish).		X		X			L	L
MR4(a-c)	W								X	North wall, extent of old construction, parging between bricks.		X			X		H	M	L	
MR2b	W					X				White joint compound.		X		X			L	L	L	
	C						X			Stucco ceiling, same as in Corridor 2, Room 7, 8' ceiling.		X		X			L	L	L	
															X					
										Mercury containing thermostat located on the west wall behind door.										
										Two fluorescent light ballasts present. Appear to be newer.										

- Notes:
- C = ceiling; W = Wall; F = Floor; P = Piping; V = vessel; O = Other
 - TSI = thermal system insulation; VSF = vinyl sheet flooring; VFT = vinyl floor tile; MJC = mud joint compound; CT = ceiling tile
 - F = friable; NF = non-friable
 - E = excellent (no damage); G = good (<10% damage); F = fair (<25% damage); P = poor (>25% damage)
 - C = contact/accessible; V = vibration; A = air erosion. Use H = high; M = moderate; L = low.

BUILDING HAZARDOUS MATERIALS SURVEY FORM



Building Information

Facility	McTavish Recreation Centre
Building I.D.	McTavish Recreation Centre
Floor	Main
Room I.D.	Room 7, Corridor 2

Project Information

Project #:	09-040-06A
Client:	Municipality of Shuniah
Date:	Wednesday, September 30, 2009
Assessor:	Mike Stachejczuk and Melanie Gauthier

LOCATION		TYPE OF MATERIAL ²								Comments	QTY	FRIABILITY ³		CONDITION ⁴				PFD ⁵		
Sample ID	Surface ¹	TSI (Pipe)	TSI (Other)	VSF	VFT	MJC	Drywall	CT	Other			F	NF	E	G	F	P	C	V	A
	F								X			Wood, painted grey like LC-1		X		X			M	L
	W						X			Painted white like LC-2		X		X			L	L	L	
	W								X	North wall consists of brick and parging. Same as lounge.		X		X			H	M	L	
MR5 (a-c)	C						X		X	Textured ceiling, painted white like LC-2. 8' ceilings.		X			X		L	M	M	
										No fluorescent lights present										

- Notes:
1. C = ceiling; W = Wall; F = Floor; P = Piping; V = vessel; O = Other
 2. TSI = thermal system insulation; VSF = vinyl sheet flooring; VFT = vinyl floor tile; MJC = mud joint compound; CT = ceiling tile
 3. F = friable; NF = non-friable
 4. E = excellent (no damage); G = good (<10% damage); F = fair (<25% damage); P = poor (>25% damage)
 5. C = contact/accessible; V = vibration; A = air erosion. Use H = high; M = moderate; L = low.

BUILDING HAZARDOUS MATERIALS SURVEY FORM



Building Information

Facility	McTavish Recreation Centre
Building I.D.	McTavish Recreation Centre
Floor	Main
Room I.D.	Room 8, Kitchen

Project Information

Project #:	09-040-06A
Client:	Municipality of Shuniah
Date:	Wednesday, September 30, 2009
Assessor:	Mike Stachejczuk and Melanie Gauthier

LOCATION		TYPE OF MATERIAL ²									Comments	QTY	FRIABILITY ³		CONDITION ⁴				PFD ⁵					
Sample ID	Surface ¹	TSI (Pipe)	TSI (Other)	VSF	VFT	MJC	Drywall	CT	Other	F			NF	E	G	F	P	C	V	A				
	F				X						Like MR3 (a-c), cream, brown, gold, pattern, 12x12, on wood.	38.0 m ²		X			X			M	L	L		
	W					X	X				MJC may be a mixture between the old and new construction, painted white like LC-2.													
	W								X		North wall consists of brick and parging. Extent of old construction. Same as lounge.													
	C						X				Painted white like LC-2, no texture. 8' ceilings.		X				X				L	L	L	
											Two fluorescent light ballasts present.													
											Pipes may contain lead solder.													
											A freezer potentially containing freon is located at the south side of the kitchen.													
											Gas lines that may or may not be still connected to a propane tank are present.													
											No propane tank observed.													

- Notes:
- C = ceiling; W = Wall; F = Floor; P = Piping; V = vessel; O = Other
 - TSI = thermal system insulation; VSF = vinyl sheet flooring; VFT = vinyl floor tile; MJC = mud joint compound; CT = ceiling tile
 - F = friable; NF = non-friable
 - E = excellent (no damage); G = good (<10% damage); F = fair (<25% damage); P = poor (>25% damage)
 - C = contact/accessible; V = vibration; A = air erosion. Use H = high; M = moderate; L = low.

BUILDING HAZARDOUS MATERIALS SURVEY FORM



Building Information

Facility	McTavish Recreation Centre
Building I.D.	McTavish Recreation Centre
Floor	Main
Room I.D.	Room 9, Main Rec. Room

Project Information

Project #:	09-040-06A
Client:	Municipality of Shuniah
Date:	Wednesday, September 30, 2009
Assessor:	Mike Stachejczuk and Melanie Gauthier

LOCATION		TYPE OF MATERIAL ²									Comments	QTY	FRIABILITY ³		CONDITION ⁴						PFD ⁵		
Sample ID	Surface ¹	TSI (Pipe)	TSI (Other)	VSF	VFT	MJC	Drywall	CT	Other	F			NF	E	G	F	P	C	V	A			
MR6 (a-c)	F				X											X					M	L	L
MR7 (a-c)	W						X		X			X							L	L	L		
LC-3	W								X					X					L	L	L		
LC-4	W								X					X					L	L	L		
MR2 c	W					X						X							M	L	L		
MR8 (a-c)									X					X					H	L	L		
MR10 (a-c)	C							X				X				X			L	L	L		

- Notes:
1. C = ceiling; W = Wall; F = Floor; P = Piping; V = vessel; O = Other
 2. TSI = thermal system insulation; VSF = vinyl sheet flooring; VFT = vinyl floor tile; MJC = mud joint compound; CT = ceiling tile
 3. F = friable; NF = non-friable
 4. E = excellent (no damage); G = good (<10% damage); F = fair (<25% damage); P = poor (>25% damage)
 5. C = contact/accessible; V = vibration; A = air erosion. Use H = high; M = moderate; L = low.

BUILDING HAZARDOUS MATERIALS SURVEY FORM



Building Information

Facility	McTavish Recreation Centre
Building I.D.	McTavish Recreation Centre
Floor	Main
Room I.D.	Room 10, Janitor's Closet

Project Information

Project #:	09-040-06A
Client:	Municipality of Shuniah
Date:	Wednesday, September 30, 2009
Assessor:	Mike Stachejczuk and Melanie Gauthier

LOCATION		TYPE OF MATERIAL ²								Comments	QTY	FRIABILITY ³		CONDITION ⁴				PFD ⁵			
Sample ID	Surface ¹	TSI (Pipe)	TSI (Other)	VSF	VFT	MJC	Drywall	CT	Other			F	NF	E	G	F	P	C	V	A	
	F								X			Concrete floor, painted grey like LC-5.		X			X			M	L
	C								X	Plaster trowelled over sheetrock like MR7 (a-c), 8' ceiling.											
	W								X	Plaster trowelled over sheetrock like MR7 (a-c).	X			X				L	L	L	
	W								X	Half painted black/grey speckled (LC-10), half painted cream(LC-4).		X		X				L	L	L	
	C								C	Painted cream like LC-4.		X		X				L	L	L	
										Household cleaning chemicals present.											
										Plumbing may contain lead solder.											
										No fluorescent lights present.											

- Notes:
- C = ceiling; W = Wall; F = Floor; P = Piping; V = vessel; O = Other
 - TSI = thermal system insulation; VSF = vinyl sheet flooring; VFT = vinyl floor tile; MJC = mud joint compound; CT = ceiling tile
 - F = friable; NF = non-friable
 - E = excellent (no damage); G = good (<10% damage); F = fair (<25% damage); P = poor (>25% damage)
 - C = contact/accessible; V = vibration; A = air erosion. Use H = high; M = moderate; L = low.

BUILDING HAZARDOUS MATERIALS SURVEY FORM



Building Information

Facility	McTavish Recreation Centre
Building I.D.	McTavish Recreation Centre
Floor	Main
Room I.D.	Room 11&12, Tuck Shop & Closet

Project Information

Project #:	09-040-06A
Client:	Municipality of Shuniah
Date:	Wednesday, September 30, 2009
Assessor:	Mike Stachejczuk and Melanie Gauthier

LOCATION		TYPE OF MATERIAL ²								Comments	QTY	FRIABILITY ³		CONDITION ⁴				PFD ⁵		
Sample ID	Surface ¹	TSI (Pipe)	TSI (Other)	VSF	VFT	MJC	Drywall	CT	Other			F	NF	E	G	F	P	C	V	A
	C							X				White, 12x12, same as MR10(a-c), 8' ceilings		X			X			L
	W						X		X	Plaster (grey) is trowelled over a secondary drywall. Painted cream like LC-4.	25m ²	X			X			L	L	L
MR11 (a-c)	F				X					Green, 9x9			X		X			L	L	L
MR12(a-c)	F				X					Cream, 9x9			X		X			L	L	L
LC-5	F								x	Light grey paint on concrete floor in closet.			X			X		M	L	L
LC-6	w								X	Turquoise paint on wall in closet.			X			X		M	L	L
MR13 (a-c)	W								X	Mastic on back black rubber baseboard, 4" high.	Throughout building		X		X			L	L	L
	W						X		X	Plaster (grey) is trowelled over a secondary drywall.		X			X			L	L	L
										Pipes may contain lead solder.										
										No fluorescent lights present.										

- Notes:
1. C = ceiling; W = Wall; F = Floor; P = Piping; V = vessel; O = Other
 2. TSI = thermal system insulation; VSF = vinyl sheet flooring; VFT = vinyl floor tile; MJC = mud joint compound; CT = ceiling tile
 3. F = friable; NF = non-friable
 4. E = excellent (no damage); G = good (<10% damage); F = fair (<25% damage); P = poor (>25% damage)
 5. C = contact/accessible; V = vibration; A = air erosion. Use H = high; M = moderate; L = low.

BUILDING HAZARDOUS MATERIALS SURVEY FORM



Building Information

Facility	McTavish Recreation Centre
Building I.D.	McTavish Recreation Centre
Floor	Main
Room I.D.	Room 13, Boys Washroom

Project Information

Project #:	09-040-06A
Client:	Municipality of Shuniah
Date:	Wednesday, September 30, 2009
Assessor:	Mike Stachejczuk and Melanie Gauthier

LOCATION		TYPE OF MATERIAL ²								Comments	QTY	FRIABILITY ³		CONDITION ⁴				PFD ⁵			
Sample ID	Surface ¹	TSI (Pipe)	TSI (Other)	VSF	VFT	MJC	Drywall	CT	Other			F	NF	E	G	F	P	C	V	A	
	F								X			Light grey paint on concrete like LC-5.	13m ²		X		X			L	L
	W						X		X	Plaster (grey) is trowelled over a secondary drywall.		X			X			L	L	L	
LC-7	W								X	Half grey and white paint, speckled and the other half painted turquoise like LC-6.	6m ²		X		X			L	L	L	
	C						X		X	Plaster (grey) is trowelled over a secondary drywall wall. Painted white like LC-2. 8'		X			X			L	L	L	
										No fluorescent lights present.											
										Pipes may contain lead solder.											

- Notes:
- C = ceiling; W = Wall; F = Floor; P = Piping; V = vessel; O = Other
 - TSI = thermal system insulation; VSF = vinyl sheet flooring; VFT = vinyl floor tile; MJC = mud joint compound; CT = ceiling tile
 - F = friable; NF = non-friable
 - E = excellent (no damage); G = good (<10% damage); F = fair (<25% damage); P = poor (>25% damage)
 - C = contact/accessible; V = vibration; A = air erosion. Use H = high; M = moderate; L = low.

BUILDING HAZARDOUS MATERIALS SURVEY FORM



Building Information

Facility	McTavish Recreation Centre
Building I.D.	McTavish Recreation Centre
Floor	Main
Room I.D.	Room 14, Girls Washroom

Project Information

Project #:	09-040-06A
Client:	Municipality of Shuniah
Date:	Wednesday, September 30, 2009
Assessor:	Mike Stachejczuk and Melanie Gauthier

LOCATION		TYPE OF MATERIAL ²								Comments	QTY	FRIABILITY ³		CONDITION ⁴				PFD ⁵				
Sample ID	Surface ¹	TSI (Pipe)	TSI (Other)	VSF	VFT	MJC	Drywall	CT	Other			F	NF	E	G	F	P	C	V	A		
	F								X			Light grey paint on concrete.(LC-5)	7m ²		X		X				L	L
	C						X		X	Plaster (grey) is trowelled over a secondary drywall. Painted white like LC-2. 8'		X			X				L	L	L	
	W						X		X	Plaster (grey) is trowelled over a secondary drywall. Painted white like LC-2.		X			X				L	L	L	
LC-8	W								X	Half painted white with yellow flecks			X		X				L	L	L	
	W								X	Half painted light brown, same as LC-3.	29m ²		X		X				L	L	L	
										No fluorescent lights present.												
										Pipes may contain lead solder.												

- Notes:
- C = ceiling; W = Wall; F = Floor; P = Piping; V = vessel; O = Other
 - TSI = thermal system insulation; VSF = vinyl sheet flooring; VFT = vinyl floor tile; MJC = mud joint compound; CT = ceiling tile
 - F = friable; NF = non-friable
 - E = excellent (no damage); G = good (<10% damage); F = fair (<25% damage); P = poor (>25% damage)
 - C = contact/accessible; V = vibration; A = air erosion. Use H = high; M = moderate; L = low.

BUILDING HAZARDOUS MATERIALS SURVEY FORM



Building Information

Facility	McTavish Recreation Centre
Building I.D.	McTavish Recreation Centre
Floor	Main
Room I.D.	Room 15, Storage Room

Project Information

Project #:	09-040-06A
Client:	Municipality of Shuniah
Date:	Wednesday, September 30, 2009
Assessor:	Mike Stachejczuk and Melanie Gauthier

LOCATION		TYPE OF MATERIAL ²								Comments	QTY	FRIABILITY ³		CONDITION ⁴				PFD ⁵		
Sample ID	Surface ¹	TSI (Pipe)	TSI (Other)	VSF	VFT	MJC	Drywall	CT	Other			F	NF	E	G	F	P	C	V	A
MR14 (a-c)	F				X							Green, 9x9, determined to be the same as MR11 (a-c).		X		X			L	L
	W						X		X	Plaster (grey) is trowelled over a secondary drywall. Turquoise paint same as LC-5.	32.5m ²	X	X		X		L	L	L	
	C						X		X	Plaster (grey) is trowelled over a secondary drywall wall. Painted white like LC-2. 8'		X			X		L	L	L	
MR15(a-c)	W								X	Blackboard, layers of paper with black and green coating.		X			X		L	L	L	
										No fluorescent lights present.										

- Notes:
- C = ceiling; W = Wall; F = Floor; P = Piping; V = vessel; O = Other
 - TSI = thermal system insulation; VSF = vinyl sheet flooring; VFT = vinyl floor tile; MJC = mud joint compound; CT = ceiling tile
 - F = friable; NF = non-friable
 - E = excellent (no damage); G = good (<10% damage); F = fair (<25% damage); P = poor (>25% damage)
 - C = contact/accessible; V = vibration; A = air erosion. Use H = high; M = moderate; L = low.

BUILDING HAZARDOUS MATERIALS SURVEY FORM



Building Information

Facility	McTavish Recreation Centre
Building I.D.	McTavish Recreation Centre
Floor	Main
Room I.D.	Room 16, Vestibule

Project Information

Project #:	09-040-06A
Client:	Municipality of Shuniah
Date:	Wednesday, September 30, 2009
Assessor:	Mike Stachejczuk and Melanie Gauthier

LOCATION		TYPE OF MATERIAL ²								Comments	QTY	FRIABILITY ³		CONDITION ⁴				PFD ⁵		
Sample ID	Surface ¹	TSI (Pipe)	TSI (Other)	VSF	VFT	MJC	Drywall	CT	Other			F	NF	E	G	F	P	C	V	A
MR16 (a-c)	F								X			Green vinyl mat with mastic on the back.		X			X	M	L	L
	C						X		X	Plaster (grey) is trowelled over a secondary drywall. Painted white like LC-2. 8'	X			X		L	L	L		
	W						X		X	Plaster (grey) is trowelled over a secondary drywall.	X			X		L	L	L		
	W								X	Half painted black and grey, speckled (LC-10) and Half painted yellow (LC-9).	20m ²		X		X		L	L	L	
										No caulking visible on windows.										
										No fluorescent lights present.										
										A fridge unit potentially containing freon present.										
										Piping may contain lead solder.										

Notes: 1. C = ceiling; W = Wall; F = Floor; P = Piping; V = vessel; O = Other
 2. TSI = thermal system insulation; VSF = vinyl sheet flooring; VFT = vinyl floor tile; MJC = mud joint compound; CT = ceiling tile
 3. F = friable; NF = non-friable
 4. E = excellent (no damage); G = good (<10% damage); F = fair (<25% damage); P = poor (>25% damage)
 5. C = contact/accessible; V = vibration; A = air erosion. Use H = high; M = moderate; L = low.

BUILDING HAZARDOUS MATERIALS SURVEY FORM



Building Information

Facility	McTavish Recreation Centre
Building I.D.	McTavish Recreation Centre
Floor	Main
Room I.D.	Room 17, Corridor 3

Project Information

Project #:	09-040-06A
Client:	Municipality of Shuniah
Date:	Wednesday, September 30, 2009
Assessor:	Mike Stachejczuk and Melanie Gauthier

LOCATION		TYPE OF MATERIAL ²								Comments	QTY	FRIABILITY ³		CONDITION ⁴				PFD ⁵				
Sample ID	Surface ¹	TSI (Pipe)	TSI (Other)	VSF	VFT	MJC	Drywall	CT	Other			F	NF	E	G	F	P	C	V	A		
MR17 (a-c)	F								X	Brown ceramic tile. 3x6.			X					L	L	L		
LC-11	F								X	Glazing on brown ceramic floor tile.			X					L	L	L		
	C						X		X	Plaster (grey) is trowelled over a secondary drywall. Painted white like LC-2. 8'		X						L	L	L		
	W									Plaster (grey) is trowelled over a secondary drywall.		X						L	L	L		
LC-9	W								X	Half painted black and grey, speckled.	50m ²		X					L	L	L		
LC-10	W								X	Half painted yellow.				X					L	L	L	

Notes:

1. C = ceiling; W = Wall; F = Floor; P = Piping; V = vessel; O = Other
2. TSI = thermal system insulation; VSF = vinyl sheet flooring; VFT = vinyl floor tile; MJC = mud joint compound; CT = ceiling tile
3. F = friable; NF = non-friable
4. E = excellent (no damage); G = good (<10% damage); F = fair (<25% damage); P = poor (>25% damage)
5. C = contact/accessible; V = vibration; A = air erosion. Use H = high; M = moderate; L = low.

BUILDING HAZARDOUS MATERIALS SURVEY FORM



Building Information

Facility	McTavish Recreation Centre
Building I.D.	McTavish Recreation Centre
Floor	Main
Room I.D.	Room 18, Furnace Room

Project Information

Project #:	09-040-06A
Client:	Municipality of Shuniah
Date:	Wednesday, September 30, 2009
Assessor:	Mike Stachejczuk and Melanie Gauthier

LOCATION		TYPE OF MATERIAL ²								Comments	QTY	FRIABILITY ³		CONDITION ⁴				PFD ⁵		
Sample ID	Surface ¹	TSI (Pipe)	TSI (Other)	VSF	VFT	MJC	Drywall	CT	Other			F	NF	E	G	F	P	C	V	A
	F								X	Painted light grey (LC-5) on concrete.	24m ²		X			X		M	L	L
	C						X		X	Plaster (grey) is trowelled over a secondary drywall wall. Painted white like LC-2. 10'										
	W						X		X	Plaster (grey) is trowelled over a secondary drywall wall. Painted turquoise like LC-6.	60m ²									
MR18 (A-C)	P	X								Air cell type pipe wrap, 20 linear feet, 2 elbows. 3" pipe.	20 linear ft	X				X		H	H	H
										It is unknown if the asbestos containing pipe wrap continues under the building.	6 m									
MR19 (a-c)	C								X	Paper vapour barrier between insulation and ceiling. Determined to be cellulose.		X				X		L	L	L
										By visual inspection insulation is made of fibreglass.										
										No fluorescent lights present.										
										Piping may contain lead solder.										
										Chimney observed in the east corner of the room.										

- Notes:
1. C = ceiling; W = Wall; F = Floor; P = Piping; V = vessel; O = Other
 2. TSI = thermal system insulation; VSF = vinyl sheet flooring; VFT = vinyl floor tile; MJC = mud joint compound; CT = ceiling tile
 3. F = friable; NF = non-friable
 4. E = excellent (no damage); G = good (<10% damage); F = fair (<25% damage); P = poor (>25% damage)
 5. C = contact/accessible; V = vibration; A = air erosion. Use H = high; M = moderate; L = low.

BUILDING HAZARDOUS MATERIALS SURVEY FORM



Building Information

Facility	McTavish Recreation Centre
Building I.D.	McTavish Recreation Centre
Floor	Exterior
Room I.D.	Exterior

Project Information

Project #:	09-040-06A
Client:	Municipality of Shuniah
Date:	Wednesday, September 30, 2009
Assessor:	Mike Stachejczuk and Melanie Gauthier

LOCATION		TYPE OF MATERIAL ²								Comments	QTY	FRIABILITY ³		CONDITION ⁴				PFD ⁵		
Sample ID	Surface ¹	TSI (Pipe)	TSI (Other)	VSF	VFT	MJC	Drywall	CT	Other			F	NF	E	G	F	P	C	V	A
	O								X			Cream paint on trim, windows and sills.	80 m ²	X				X	M	L
MR20 (a-c)	Roof								X	Shingles, tan and black, addition side.			X				L	L	L	
MR21 (a-c)	Roof								X	Shingles, green and black, older side.			X				L	L	L	
MR22 (a-c)	W								X	Brick mortar, addition side.		X			X		M	L	L	
	W								X	Brick mortar, older side.		X			X		M	L	L	
										No window caulking.										

Notes:

1. C = ceiling; W = Wall; F = Floor; P = Piping; V = vessel; O = Other
2. TSI = thermal system insulation; VSF = vinyl sheet flooring; VFT = vinyl floor tile; MJC = mud joint compound; CT = ceiling tile
3. F = friable; NF = non-friable
4. E = excellent (no damage); G = good (<10% damage); F = fair (<25% damage); P = poor (>25% damage)
5. C = contact/accessibile; V = vibration; A = air erosion. Use H = high; M = moderate; L = low.

**Appendix C:
Laboratory Certificates of Analysis**

Table 1: Fibre Analysis for samples collected and submitted for analysis on behalf of the Municipality of Shuniah by TGCL

TGCL Reference #: 09-040-06A
 Client Reference: McTavish Rec Centre

Sample #	Sample description	Asbestos Detected	Type of Asbestos	Non-Asbestos Fibres	Percent* (volume)
1	Bulk sample identified as "MR4a – parking material from main floor, room 6, lounge, north wall". [09-00762] Firm, grey, concrete-like material.	NO	--	Non-fibrous	
2	Bulk sample identified as "MR4b – parking material from main floor, room 6, lounge, north wall". [09-00763] Firm, grey, concrete-like material.	NO	--	Hair	1-10%
3	Bulk sample identified as "MR4c – parking material from main floor, room 6, lounge, north wall". [09-00764] Firm, grey, concrete-like material.	NO	--	Non-fibrous	
4	Bulk sample identified as "MR1a – light grey parking material from basement room 1". [09-01009] Firm, grey, concrete-like material.	NO	--	Non-fibrous	
5	Bulk sample identified as "MR1b – light grey parking material from basement room 1". [09-01010] Firm, grey, concrete-like material.	NO	--	Non-fibrous	

METHOD: Dispersion Staining with Polarized Light Microscopy (PLM), U.S. Environmental Protection Agency Test Method EPA/600/R-93/116 Method for Determination of Asbestos in Bulk Building Materials, June 1993 as per Ontario Regulation 278/05, November 1, 2005.

NOTES:

* Results reported as percent (by volume) of total particulates observed. Results reported for a sample may not total 100%.

MMMF (Man-Made Mineral Fibres) may include fibreglass, mineral wool, slag wool, rock wool and ceramic fibres. Synthetic fibres may include; nylon, dacron, orlon, polyester.

Detection Limit of this method is approximately 0.5% (percent volume). The symbol for less than is "<" and the symbol for greater than is ">"

[#####] = TGCL sample tracking number

DATE: November 16, 2009

ANALYST: _____

Jacquie Elvish, BSc., CRSP
 Senior Health and Safety Specialist

APPROVED: _____

Ina Chomyshyn, BSc. (Hons), CIH, ROH
 Senior Industrial Hygienist

Table 1: Fibre Analysis for samples collected and submitted for analysis on behalf of the Municipality of Shuniah by TGCL

TGCL Reference #: 09-040-06A
Client Reference: McTavish Rec Centre

Sample #	Sample description	Asbestos Detected	Type of Asbestos	Non-Asbestos Fibres	Percent (volume)
6	Bulk sample identified as "MR1c – light grey parging material from basement room 1". [09-01011] Firm, grey, concrete-like material.	NO	--	Non-fibrous	
7	Bulk sample identified as "MR22a – exterior mortar, new". [09-01012] Hard, grey, concrete-like material.	NO	--	Non-fibrous	
8	Bulk sample identified as "MR22b – exterior mortar, new". [09-01013] Hard, grey, concrete-like material.	NO	--	Non-fibrous	
9	Bulk sample identified as "MR22c – exterior mortar, new". [09-01014] Hard, grey, concrete-like material.	NO	--	Non-fibrous	

Request for Laboratory Services - Chain of Custody



REPORT TO:		Company Name: <u>Mun. of Suroosh.</u>	
Contact:		Contact:	
Address:		Address:	
Phone #:		Phone #:	
email:		Fax #:	
Send results by:		<input type="checkbox"/> Fax <input type="checkbox"/> Mail <input type="checkbox"/> Phone <input type="checkbox"/> Email	

INVOICE TO:		Company Name:	
<input type="checkbox"/> Same <input type="checkbox"/> Other		Contact:	
Address:		Address:	
Phone #:		Phone #:	
Fax #:		Fax #:	
Turn Around Time (TAT)		REGULAR (3-5 DAYS, DEFAULT)	
for Asbestos Only		RUSH (24 - 48 HRS. 50% SURCHARGE)	
		EMERGENCY (<24 HRS OR WEEKEND, 100% SURCHARGE)	

Sample ID	Data Collected	Sample Type (Air, Bulk, Dust, etc.)	Description (As it will appear on the report)	Analysis Requested (include TAT for Asbestos)			TGCL Sample Tracking No.
				Airborne Asbestos (PCM)	Bulk Asbestos (PLM)	Other (by special request)	
MR4a		B	" MR4a - Parging main floor room 6 lounge north wall "		✓		09-00762
MR4b		B	" "		✓		09-00763
MR4c		B	" "		✓		09-00764

Special Instructions: *Samples collected by TGCL on behalf of Mun. of Suroosh.*

Relinquished by: (Please Print)	Date:	Time:	Signature:
Accepted by: (Please Print)	Date:	Time:	Signature:
TGCL Project No.	Date Analyzed:	Time:	Analyst:
09-090-06A	00729/09		<i>[Signature]</i>

PRELIMINARY RESULTS

Please Deliver Promptly To: *nelson*

Company: *True Grit*

Fax: *nelson*

From:

Date: *10-9-09*

Number of Pages Including This Page: 21

Message:

Preliminary results are issued by IATL to expedite client decision making. There are several factors that limit these results: sampling methods, sampling data, packaging and handling. These results may not have been reviewed by the Laboratory Director. Final Certificates of Analysis will follow these preliminary results. The signed COA is considered the official results.

The attached report may not be reproduced except in full without the express written permission of IATL.

This Facsimile transmission is intended only for the addressee shown above. It may contain information that is privileged, confidential or otherwise protected from disclosure. Any review, dissemination or use of this transmission or any of its contents by persons other than the addressee is strictly prohibited. If you received this fax in error, please call us immediately upon receipt and return the facsimile documents to the address above.
Thank you for your cooperation.

CERTIFICATE OF ANALYSIS

Client: True Grit Consultants, Ltd.
1127 Barton Street
Thunder Bay ON P7B 5N3

Report Date: 10/9/2009
Project: McTavish Rec Centre DSS
Project No.: 09-040-06A

BULK SAMPLE ANALYSIS SUMMARY

Lab No.: 3754405 **Description / Location:** White Joint Compound
Client No.: MR2a (South) Stairwell; Room 2

<u>% Asbestos</u>	<u>Type</u>	<u>% Non-Asbestos Fibrous Material</u>	<u>Type</u>	<u>% Non-Fibrous Material</u>
None Detected	None Detected	None Detected	None Detected	100

Lab No.: 3754406 **Description / Location:** White Joint Compound
Client No.: MR2b Lounge; Room 6

<u>% Asbestos</u>	<u>Type</u>	<u>% Non-Asbestos Fibrous Material</u>	<u>Type</u>	<u>% Non-Fibrous Material</u>
None Detected	None Detected	None Detected	None Detected	100

Lab No.: 3754407 **Description / Location:** Off-White Joint Compound
Client No.: MR2c Main Rec. Room; Room 9

<u>% Asbestos</u>	<u>Type</u>	<u>% Non-Asbestos Fibrous Material</u>	<u>Type</u>	<u>% Non-Fibrous Material</u>
PC 2.2	Chrysotile	None Detected	None Detected	PC 97.8

Lab No.: 3754408 **Description / Location:** Tan Floor Tile; 12x12
Client No.: MR3a Washroom; Room 4

<u>% Asbestos</u>	<u>Type</u>	<u>% Non-Asbestos Fibrous Material</u>	<u>Type</u>	<u>% Non-Fibrous Material</u>
PC 2.5	Chrysotile	None Detected	None Detected	PC 97.5

NIST-NVLAP No. 101165-0

NY-DOH No. 11021

AIHA Lab No. 100188

*This confidential report relates only to those item(s) tested and does not represent an endorsement by NIST-NVLAP, AIHA or any agency of the U.S. government.
This report shall not be reproduced except in full, without written approval of the laboratory.*

Analysis Method: EPA 600/R-93/116

Comments: (PC) Indicates Stratified Point Count Method performed. Method not performed unless stated. Quantification at <0.25% by volume is possible with this method. (PC-Trace) represents this limit of quantitation. (PC-Trace) means that asbestos was detected but is not quantifiable under the Point Counting regimen. Analysis includes all distinct separable layers in accordance with EPA 600 Method. If not reported or otherwise noted, layer is either not present or the client has specifically requested that it not be analyzed. Small asbestos fibers may be missed by PLM due to resolution limitations of the optical microscope. Therefore, negative PLM results cannot be guaranteed. Electron Microscopy can be used as a confirming technique. Regulatory Limit is based upon the sample matrix.

Analysis Performed By: L. Solebello

Approved By:

Date: 10/8/2009

Frank E. Ehrenfeld, III
Laboratory Director

CERTIFICATE OF ANALYSIS

Client: True Grit Consultants, Ltd.
1127 Barton Street
Thunder Bay ON P7B 5N3

Report Date: 10/9/2009
Project: McTavish Rec Centre DSS
Project No.: 09-040-06A

BULK SAMPLE ANALYSIS SUMMARY

Lab No.: 3754409	Description / Location: Sample Not Analyzed		
Client No.: MR3b			
<u>% Asbestos</u>	<u>Type</u>	<u>% Non-Asbestos Fibrous Material</u>	<u>Type</u>
Sample Not Analyzed		Sample Not Analyzed	

Lab No.: 3754410	Description / Location: Sample Not Analyzed		
Client No.: MR3c			
<u>% Asbestos</u>	<u>Type</u>	<u>% Non-Asbestos Fibrous Material</u>	<u>Type</u>
Sample Not Analyzed		Sample Not Analyzed	

Lab No.: 3754411	Description / Location: White Ceiling Texture Hallway, Room 7		
Client No.: MR5a			
<u>% Asbestos</u>	<u>Type</u>	<u>% Non-Asbestos Fibrous Material</u>	<u>Type</u>
None Detected	None Detected	None Detected	None Detected
			100

Lab No.: 3754412	Description / Location: White Ceiling Texture Hallway, Room 7		
Client No.: MR5b			
<u>% Asbestos</u>	<u>Type</u>	<u>% Non-Asbestos Fibrous Material</u>	<u>Type</u>
None Detected	None Detected	None Detected	None Detected
			100

NIST-NVLAP No. 101165-0

NY-DOH No. 11021

AIHA Lab No. 100188

*This confidential report relates only to those item(s) tested and does not represent an endorsement by NIST-NVLAP, AIHA or any agency of the U.S. government
This report shall not be reproduced except in full, without written approval of the laboratory.*

Analysis Method: EPA 600/R-93/116

Comments: (PC) Indicates Stratified Point Count Method performed. Method not performed unless stated. Quantification at <0.25% by volume is possible with this method. (PC-Trace) represents this limit of quantitation. (PC-Trace) means that asbestos was detected but is not quantifiable under the Point Counting regimen. Analysis includes all distinct separable layers in accordance with EPA 600 Method. If not reported or otherwise noted, layer is either not present or the client has specifically requested that it not be analyzed. Small asbestos fibers may be missed by PLM due to resolution limitations of the optical microscope. Therefore, negative PLM results cannot be guaranteed. Electron Microscopy can be used as a confirming technique. Regulatory Limit is based upon the sample matrix.

Analysis Performed By: L. Solebello

Date: 10/8/2009

CERTIFICATE OF ANALYSIS

Client: True Grit Consultants, Ltd.
1127 Barton Street
Thunder Bay ON P7B 5N3

Report Date: 10/9/2009
Project: McTavish Rec Centre DSS
Project No.: 09-040-06A

BULK SAMPLE ANALYSIS SUMMARY

Lab No.: 3754413 **Description / Location:** White Ceiling Texture
Client No.: MR5c Hallway, Room 7

<u>% Asbestos</u>	<u>Type</u>	<u>% Non-Asbestos Fibrous Material</u>	<u>Type</u>	<u>% Non-Fibrous Material</u>
None Detected	None Detected	None Detected	None Detected	100

Lab No.: 3754414 **Description / Location:** Tan Floor Tile; 12x12
Client No.: MR6a Main Rec. Room; Room 9

<u>% Asbestos</u>	<u>Type</u>	<u>% Non-Asbestos Fibrous Material</u>	<u>Type</u>	<u>% Non-Fibrous Material</u>
None Detected	None Detected	None Detected	None Detected	100

Lab No.: 3754414 **Description / Location:** Black Mastic **Layer No.:** 2
Client No.: MR6a Main Rec. Room; Room 9

<u>% Asbestos</u>	<u>Type</u>	<u>% Non-Asbestos Fibrous Material</u>	<u>Type</u>	<u>% Non-Fibrous Material</u>
None Detected	None Detected	None Detected	None Detected	100

NIST-NVLAP No. 101165-0

NY-DOH No. 11021

AIHA Lab No. 100188

*This confidential report relates only to those item(s) tested and does not represent an endorsement by NIST-NVLAP, AIHA or any agency of the U.S. government
This report shall not be reproduced except in full, without written approval of the laboratory.*

Analysis Method: EPA 600/R-93/116

Comments: (PC) Indicates Stratified Point Count Method performed. Method not performed unless stated. Quantification at <0.25% by volume is possible with this method. (PC-Trace) represents this limit of quantitation. (PC-Trace) means that asbestos was detected but is not quantifiable under the Point Counting regimen. Analysis includes all distinct separable layers in accordance with EPA 600 Method. If not reported or otherwise noted, layer is either not present or the client has specifically requested that it not be analyzed. Small asbestos fibers may be missed by PLM due to resolution limitations of the optical microscope. Therefore, negative PLM results cannot be guaranteed. Electron Microscopy can be used as a confirming technique. Regulatory Limit is based upon the sample matrix.

Analysis Performed By: L. Solebello

Date: 10/8/2009

CERTIFICATE OF ANALYSIS

Client: True Grit Consultants, Ltd.
1127 Barton Street
Thunder Bay ON P7B 5N3

Report Date: 10/9/2009
Project: McTavish Rec Centre DSS
Project No.: 09-040-06A

BULK SAMPLE ANALYSIS SUMMARY

Lab No.: 3754415	Description / Location: Tan Floor Tile; 12x12 Main Rec. Room; Room 9			
Client No.: MR6b				
<u>% Asbestos</u>	<u>Type</u>	<u>% Non-Asbestos Fibrous Material</u>	<u>Type</u>	<u>% Non-Fibrous Material</u>
None Detected	None Detected	None Detected	None Detected	100

Lab No.: 3754415	Description / Location: Black Mastic Main Rec. Room; Room 9			Layer No.: 2
Client No.: MR6b				
<u>% Asbestos</u>	<u>Type</u>	<u>% Non-Asbestos Fibrous Material</u>	<u>Type</u>	<u>% Non-Fibrous Material</u>
None Detected	None Detected	None Detected	None Detected	100

Lab No.: 3754416	Description / Location: Tan Floor Tile; 12x12 Main Rec. Room; Room 9			
Client No.: MR6c				
<u>% Asbestos</u>	<u>Type</u>	<u>% Non-Asbestos Fibrous Material</u>	<u>Type</u>	<u>% Non-Fibrous Material</u>
None Detected	None Detected	None Detected	None Detected	100

Lab No.: 3754416	Description / Location: Black Mastic Main Rec. Room; Room 9			Layer No.: 2
Client No.: MR6c				
<u>% Asbestos</u>	<u>Type</u>	<u>% Non-Asbestos Fibrous Material</u>	<u>Type</u>	<u>% Non-Fibrous Material</u>
None Detected	None Detected	None Detected	None Detected	100

NIST-NVLAP No. 101165-0

NY-DOH No. 11021

AIHA Lab No. 100188

*This confidential report relates only to those item(s) tested and does not represent an endorsement by NIST-NVLAP, AIHA or any agency of the U.S. government
This report shall not be reproduced except in full, without written approval of the laboratory.*

Analysis Method: EPA 600/R-93/116

Comments: (PC) Indicates Stratified Point Count Method performed. Method not performed unless stated. Quantification at <0.25% by volume is possible with this method. (PC-Trace) represents this limit of quantitation. (PC-Trace) means that asbestos was detected but is not quantifiable under the Point Counting regimen. Analysis includes all distinct separable layers in accordance with EPA 600 Method. If not reported or otherwise noted, layer is either not present or the client has specifically requested that it not be analyzed. Small asbestos fibers may be missed by PLM due to resolution limitations of the optical microscope. Therefore, negative PLM results cannot be guaranteed. Electron Microscopy can be used as a confirming technique. Regulatory Limit is based upon the sample matrix.

Analysis Performed By: L. Solebello

Date: 10/8/2009

CERTIFICATE OF ANALYSIS

Client: True Grit Consultants, Ltd.
1127 Barton Street
Thunder Bay ON P7B 5N3

Report Date: 10/9/2009
Project: McTavish Rec Centre DSS
Project No.: 09-040-06A

BULK SAMPLE ANALYSIS SUMMARY

Lab No.: 3754417 **Description / Location:** Grey Plaster
Client No.: MR7a Main Rec. Room; Room 9

<u>% Asbestos</u>	<u>Type</u>	<u>% Non-Asbestos Fibrous Material</u>	<u>Type</u>	<u>% Non-Fibrous Material</u>
None Detected	None Detected	Trace	Cellulose	100

Lab No.: 3754417 **Description / Location:** White/Tan Sheetrock **Layer No.:** 2
Client No.: MR7a Main Rec. Room; Room 9

<u>% Asbestos</u>	<u>Type</u>	<u>% Non-Asbestos Fibrous Material</u>	<u>Type</u>	<u>% Non-Fibrous Material</u>
None Detected	None Detected	20	Cellulose	80

Lab No.: 3754418 **Description / Location:** Grey Plaster
Client No.: MR7b Main Rec. Room; Room 9

<u>% Asbestos</u>	<u>Type</u>	<u>% Non-Asbestos Fibrous Material</u>	<u>Type</u>	<u>% Non-Fibrous Material</u>
None Detected	None Detected	None Detected	None Detected	100

Lab No.: 3754418 **Description / Location:** White/Tan Sheetrock **Layer No.:** 2
Client No.: MR7b Main Rec. Room; Room 9

<u>% Asbestos</u>	<u>Type</u>	<u>% Non-Asbestos Fibrous Material</u>	<u>Type</u>	<u>% Non-Fibrous Material</u>
None Detected	None Detected	12	Cellulose	88

NIST-NVLAP No. 101165-0**NY-DOH No. 11021****AIHA Lab No. 100188**

*This confidential report relates only to those item(s) tested and does not represent an endorsement by NIST-NVLAP, AIHA or any agency of the U.S. government
This report shall not be reproduced except in full, without written approval of the laboratory.*

Analysis Method: EPA 600/R-93/116

Comments: (PC) Indicates Stratified Point Count Method performed. Method not performed unless stated. Quantification at <0.25% by volume is possible with this method. (PC-Trace) represents this limit of quantitation. (PC-Trace) means that asbestos was detected but is not quantifiable under the Point Counting regimen. Analysis includes all distinct separable layers in accordance with EPA 600 Method. If not reported or otherwise noted, layer is either not present or the client has specifically requested that it not be analyzed. Small asbestos fibers may be missed by PLM due to resolution limitations of the optical microscope. Therefore, negative PLM results cannot be guaranteed. Electron Microscopy can be used as a confirming technique. Regulatory Limit is based upon the sample matrix.

Analysis Performed By: L. Solebello**Date:** 10/8/2009

CERTIFICATE OF ANALYSIS

Client: True Grit Consultants, Ltd.
1127 Barton Street
Thunder Bay ON P7B 5N3

Report Date: 10/9/2009
Project: McTavish Rec Centre DSS
Project No.: 09-040-06A

BULK SAMPLE ANALYSIS SUMMARY

Lab No.: 3754419 **Description / Location:** Grey Plaster
Client No.: MR7c Hallway, Room 17

<u>% Asbestos</u>	<u>Type</u>	<u>% Non-Asbestos Fibrous Material</u>	<u>Type</u>	<u>% Non-Fibrous Material</u>
None Detected	None Detected	None Detected	None Detected	100

Lab No.: 3754419 **Description / Location:** Tan/White Sheetrock **Layer No.:** 2
Client No.: MR7c Hallway, Room 17

<u>% Asbestos</u>	<u>Type</u>	<u>% Non-Asbestos Fibrous Material</u>	<u>Type</u>	<u>% Non-Fibrous Material</u>
None Detected	None Detected	40	Cellulose	60

Lab No.: 3754420 **Description / Location:** Tan/Black Counter Tile
Client No.: MR8a Window Sills; Main Rec. Room; Room 9

<u>% Asbestos</u>	<u>Type</u>	<u>% Non-Asbestos Fibrous Material</u>	<u>Type</u>	<u>% Non-Fibrous Material</u>
None Detected	None Detected	40	Cellulose	60

Lab No.: 3754420 **Description / Location:** Brown Mastic **Layer No.:** 2
Client No.: MR8a Window Sills; Main Rec. Room; Room 9

<u>% Asbestos</u>	<u>Type</u>	<u>% Non-Asbestos Fibrous Material</u>	<u>Type</u>	<u>% Non-Fibrous Material</u>
None Detected	None Detected	None Detected	None Detected	100

NIST-NVLAP No. 101165-0

NY-DOH No. 11021

AIHA Lab No. 100188

*This confidential report relates only to those item(s) tested and does not represent an endorsement by NIST-NVLAP, AIHA or any agency of the U.S. government.
This report shall not be reproduced except in full, without written approval of the laboratory.*

Analysis Method: EPA 600/R-93/116

Comments: (PC) Indicates Stratified Point Count Method performed. Method not performed unless stated. Quantification at <0.25% by volume is possible with this method. (PC-Trace) represents this limit of quantitation. (PC-Trace) means that asbestos was detected but is not quantifiable under the Point Counting regimen. Analysis includes all distinct separable layers in accordance with EPA 600 Method. If not reported or otherwise noted, layer is either not present or the client has specifically requested that it not be analyzed. Small asbestos fibers may be missed by PLM due to resolution limitations of the optical microscope. Therefore, negative PLM results cannot be guaranteed. Electron Microscopy can be used as a confirming technique. Regulatory Limit is based upon the sample matrix.

Analysis Performed By: L. Solebello

Date: 10/8/2009

CERTIFICATE OF ANALYSIS**Client:** True Grit Consultants, Ltd.
1127 Barton Street
Thunder Bay ON P7B 5N3**Report Date:** 10/9/2009
Project: McTavish Rec Centre DSS
Project No.: 09-040-06A**BULK SAMPLE ANALYSIS SUMMARY**

Lab No.: 3754421	Description / Location: Tan/Black Counter Tile			
Client No.: MR8b	Window Sills; Main Rec. Room; Room 9			
<u>% Asbestos</u>	<u>Type</u>	<u>% Non-Asbestos Fibrous Material</u>	<u>Type</u>	<u>% Non-Fibrous Material</u>
None Detected	None Detected	40	Cellulose	60

Lab No.: 3754421	Description / Location: Brown Mastic	Layer No.: 2		
Client No.: MR8b	Window Sills; Main Rec. Room; Room 9			
<u>% Asbestos</u>	<u>Type</u>	<u>% Non-Asbestos Fibrous Material</u>	<u>Type</u>	<u>% Non-Fibrous Material</u>
None Detected	None Detected	None Detected	None Detected	100

Lab No.: 3754422	Description / Location: Tan/Black Counter Tile			
Client No.: MR8c	Window Sills; Main Rec. Room; Room 9			
<u>% Asbestos</u>	<u>Type</u>	<u>% Non-Asbestos Fibrous Material</u>	<u>Type</u>	<u>% Non-Fibrous Material</u>
None Detected	None Detected	30	Cellulose	70

Lab No.: 3754422	Description / Location: Brown Mastic	Layer No.: 2		
Client No.: MR8c	Window Sills; Main Rec. Room; Room 9			
<u>% Asbestos</u>	<u>Type</u>	<u>% Non-Asbestos Fibrous Material</u>	<u>Type</u>	<u>% Non-Fibrous Material</u>
None Detected	None Detected	None Detected	None Detected	100

NIST-NVLAP No. 101165-0**NY-DOH No. 11021****AIHA Lab No. 100188**

*This confidential report relates only to those item(s) tested and does not represent an endorsement by NIST-NVLAP, AIHA or any agency of the U.S. government
This report shall not be reproduced except in full, without written approval of the laboratory.*

Analysis Method: EPA 600/R-93/116

Comments: (PC) Indicates Stratified Point Count Method performed. Method not performed unless stated. Quantification at <0.25% by volume is possible with this method. (PC-Trace) represents this limit of quantitation. (PC-Trace) means that asbestos was detected but is not quantifiable under the Point Counting regimen. Analysis includes all distinct separable layers in accordance with EPA 600 Method. If not reported or otherwise noted, layer is either not present or the client has specifically requested that it not be analyzed. Small asbestos fibers may be missed by PLM due to resolution limitations of the optical microscope. Therefore, negative PLM results cannot be guaranteed. Electron Microscopy can be used as a confirming technique. Regulatory Limit is based upon the sample matrix.

Analysis Performed By: L. Solebello**Date:** 10/8/2009

CERTIFICATE OF ANALYSIS

Client: True Grit Consultants, Ltd.
1127 Barton Street
Thunder Bay ON P7B 5N3

Report Date: 10/9/2009
Project: McTavish Rec Centre DSS
Project No.: 09-040-06A

BULK SAMPLE ANALYSIS SUMMARY

Lab No.: 3754423 **Description / Location:** Blue Floor Tile; 9x9
Client No.: MR11a Tuck Shop; Room 11

<u>% Asbestos</u>	<u>Type</u>	<u>% Non-Asbestos Fibrous Material</u>	<u>Type</u>	<u>% Non-Fibrous Material</u>
None Detected	None Detected	15	Cellulose	85

Lab No.: 3754423 **Description / Location:** Brown Mastic **Layer No.:** 2
Client No.: MR11a Tuck Shop; Room 11

<u>% Asbestos</u>	<u>Type</u>	<u>% Non-Asbestos Fibrous Material</u>	<u>Type</u>	<u>% Non-Fibrous Material</u>
None Detected	None Detected	None Detected	None Detected	100

Lab No.: 3754424 **Description / Location:** Blue Floor Tile; 9x9
Client No.: MR11b Tuck Shop; Room 11

<u>% Asbestos</u>	<u>Type</u>	<u>% Non-Asbestos Fibrous Material</u>	<u>Type</u>	<u>% Non-Fibrous Material</u>
None Detected	None Detected	15	Cellulose	85

Lab No.: 3754424 **Description / Location:** Brown Mastic **Layer No.:** 2
Client No.: MR11b Tuck Shop; Room 11

<u>% Asbestos</u>	<u>Type</u>	<u>% Non-Asbestos Fibrous Material</u>	<u>Type</u>	<u>% Non-Fibrous Material</u>
None Detected	None Detected	None Detected	None Detected	100

NIST-NVLAP No. 101165-0

NY-DOH No. 11021

AIHA Lab No. 100188

*This confidential report relates only to those item(s) tested and does not represent an endorsement by NIST-NVLAP, AIHA or any agency of the U.S. government
This report shall not be reproduced except in full, without written approval of the laboratory.*

Analysis Method: EPA 600/R-93/116

Comments: (PC) Indicates Stratified Point Count Method performed. Method not performed unless stated. Quantification at <0.25% by volume is possible with this method. (PC-Trace) represents this limit of quantitation. (PC-Trace) means that asbestos was detected but is not quantifiable under the Point Counting regimen. Analysis includes all distinct separable layers in accordance with EPA 600 Method. If not reported or otherwise noted, layer is either not present or the client has specifically requested that it not be analyzed. Small asbestos fibers may be missed by PLM due to resolution limitations of the optical microscope. Therefore, negative PLM results cannot be guaranteed. Electron Microscopy can be used as a confirming technique. Regulatory Limit is based upon the sample matrix.

Analysis Performed By: L. Solebello

Date: 10/8/2009

CERTIFICATE OF ANALYSIS

Client: True Grit Consultants, Ltd.
1127 Barton Street
Thunder Bay ON P7B 5N3

Report Date: 10/9/2009
Project: McTavish Rec Centre DSS
Project No.: 09-040-06A

BULK SAMPLE ANALYSIS SUMMARY

Lab No.: 3754425 **Description / Location:** Blue Floor Tile; 9x9
Client No.: MR11c Tuck Shop; Room 11

<u>% Asbestos</u>	<u>Type</u>	<u>% Non-Asbestos Fibrous Material</u>	<u>Type</u>	<u>% Non-Fibrous Material</u>
None Detected	None Detected	15	Cellulose	85

Lab No.: 3754425 **Description / Location:** Brown Mastic **Layer No.:** 2
Client No.: MR11c Tuck Shop; Room 11

<u>% Asbestos</u>	<u>Type</u>	<u>% Non-Asbestos Fibrous Material</u>	<u>Type</u>	<u>% Non-Fibrous Material</u>
None Detected	None Detected	None Detected	None Detected	100

Lab No.: 3754426 **Description / Location:** Off-White Floor Tile; 9x9
Client No.: MR12a Tuck Shop; Room 11

<u>% Asbestos</u>	<u>Type</u>	<u>% Non-Asbestos Fibrous Material</u>	<u>Type</u>	<u>% Non-Fibrous Material</u>
None Detected	None Detected	15	Cellulose	85

Lab No.: 3754426 **Description / Location:** Brown Mastic **Layer No.:** 2
Client No.: MR12a Tuck Shop; Room 11

<u>% Asbestos</u>	<u>Type</u>	<u>% Non-Asbestos Fibrous Material</u>	<u>Type</u>	<u>% Non-Fibrous Material</u>
None Detected	None Detected	None Detected	None Detected	100

NIST-NVLAP No. 101165-0

NY-DOH No. 11021

AIHA Lab No. 100188

*This confidential report relates only to those item(s) tested and does not represent an endorsement by NIST-NVLAP, AIHA or any agency of the U.S. government
This report shall not be reproduced except in full, without written approval of the laboratory.*

Analysis Method: EPA 600/R-93/116

Comments: (PC) Indicates Stratified Point Count Method performed. Method not performed unless stated. Quantification at <0.25% by volume is possible with this method. (PC-Trace) represents this limit of quantitation. (PC-Trace) means that asbestos was detected but is not quantifiable under the Point Counting regimen. Analysis includes all distinct separable layers in accordance with EPA 600 Method. If not reported or otherwise noted, layer is either not present or the client has specifically requested that it not be analyzed. Small asbestos fibers may be missed by PLM due to resolution limitations of the optical microscope. Therefore, negative PLM results cannot be guaranteed. Electron Microscopy can be used as a confirming technique. Regulatory Limit is based upon the sample matrix.

Analysis Performed By: L. Solbello

Date: 10/8/2009

CERTIFICATE OF ANALYSIS

Client: True Grit Consultants, Ltd.
1127 Barton Street
Thunder Bay ON P7B 5N3

Report Date: 10/9/2009
Project: McTavish Rec Centre DSS
Project No.: 09-040-06A

BULK SAMPLE ANALYSIS SUMMARY

Lab No.: 3754427	Description / Location: Off-White Floor Tile; 9x9		
Client No.: MR12b	Tuck Shop; Room 11		
<u>% Asbestos</u>	<u>Type</u>	<u>% Non-Asbestos Fibrous Material</u>	<u>Type</u>
None Detected	None Detected	15	Cellulose
			<u>% Non-Fibrous Material</u>
			85

Lab No.: 3754428	Description / Location: Brown Mastic		Layer No.: 2
Client No.: MR12b	Tuck Shop; Room 11		
<u>% Asbestos</u>	<u>Type</u>	<u>% Non-Asbestos Fibrous Material</u>	<u>Type</u>
None Detected	None Detected	None Detected	None Detected
			<u>% Non-Fibrous Material</u>
			100

Lab No.: 3754428	Description / Location: Off-White Floor Tile; 9x9		
Client No.: MR12c	Tuck Shop; Room 11		
<u>% Asbestos</u>	<u>Type</u>	<u>% Non-Asbestos Fibrous Material</u>	<u>Type</u>
None Detected	None Detected	15	Cellulose
			<u>% Non-Fibrous Material</u>
			85

Lab No.: 3754428	Description / Location: Brown Mastic		Layer No.: 2
Client No.: MR12c	Tuck Shop; Room 11		
<u>% Asbestos</u>	<u>Type</u>	<u>% Non-Asbestos Fibrous Material</u>	<u>Type</u>
None Detected	None Detected	None Detected	None Detected
			<u>% Non-Fibrous Material</u>
			100

NIST-NVLAP No. 101165-0

NY-DOH No. 11021

AIHA Lab No. 100188

*This confidential report relates only to those item(s) tested and does not represent an endorsement by NIST-NVLAP, AIHA or any agency of the U.S. government
This report shall not be reproduced except in full, without written approval of the laboratory.*

Analysis Method: EPA 600/R-93/116

Comments: (PC) Indicates Stratified Point Count Method performed. Method not performed unless stated. Quantification at <0.25% by volume is possible with this method. (PC-Trace) represents this limit of quantitation. (PC-Trace) means that asbestos was detected but is not quantifiable under the Point Counting regimen. Analysis includes all distinct separable layers in accordance with EPA 600 Method. If not reported or otherwise noted, layer is either not present or the client has specifically requested that it not be analyzed. Small asbestos fibers may be missed by PLM due to resolution limitations of the optical microscope. Therefore, negative PLM results cannot be guaranteed. Electron Microscopy can be used as a confirming technique. Regulatory Limit is based upon the sample matrix.

Analysis Performed By: L. Solebello

Date: 10/8/2009

CERTIFICATE OF ANALYSIS

Client: True Grit Consultants, Ltd.
1127 Barton Street
Thunder Bay ON P7B 5N3

Report Date: 10/9/2009
Project: McTavish Rec Centre DSS
Project No.: 09-040-06A

BULK SAMPLE ANALYSIS SUMMARY

Lab No.: 3754429 **Description / Location:** Brown Rubber Baseboard Mastic
Client No.: MR13a Tuck Shop; Room 11

<u>% Asbestos</u>	<u>Type</u>	<u>% Non-Asbestos Fibrous Material</u>	<u>Type</u>	<u>% Non-Fibrous Material</u>
None Detected	None Detected	None Detected	None Detected	100

Lab No.: 3754430 **Description / Location:** Brown Rubber Baseboard Mastic
Client No.: MR13b Tuck Shop; Room 11

<u>% Asbestos</u>	<u>Type</u>	<u>% Non-Asbestos Fibrous Material</u>	<u>Type</u>	<u>% Non-Fibrous Material</u>
None Detected	None Detected	None Detected	None Detected	100

Lab No.: 3754431 **Description / Location:** Brown Rubber Baseboard Mastic
Client No.: MR13c Tuck Shop; Room 11

<u>% Asbestos</u>	<u>Type</u>	<u>% Non-Asbestos Fibrous Material</u>	<u>Type</u>	<u>% Non-Fibrous Material</u>
None Detected	None Detected	None Detected	None Detected	100

Lab No.: 3754432 **Description / Location:** Black/Green/Tan Cove Base
Client No.: MR15a Storage; Room 15

<u>% Asbestos</u>	<u>Type</u>	<u>% Non-Asbestos Fibrous Material</u>	<u>Type</u>	<u>% Non-Fibrous Material</u>
None Detected	None Detected	85	Cellulose	15

NIST-NVLAP No. 101165-0

NY-DOH No. 11021

AIHA Lab No. 100188

*This confidential report relates only to those item(s) tested and does not represent an endorsement by NIST-NVLAP, AIHA or any agency of the U.S. government
This report shall not be reproduced except in full, without written approval of the laboratory.*

Analysis Method: EPA 600/R-93/116

Comments: (PC) Indicates Stratified Point Count Method performed. Method not performed unless stated. Quantification at <0.25% by volume is possible with this method. (PC-Trace) represents this limit of quantitation. (PC-Trace) means that asbestos was detected but is not quantifiable under the Point Counting regimen. Analysis includes all distinct separable layers in accordance with EPA 600 Method. If not reported or otherwise noted, layer is either not present or the client has specifically requested that it not be analyzed. Small asbestos fibers may be missed by PLM due to resolution limitations of the optical microscope. Therefore, negative PLM results cannot be guaranteed. Electron Microscopy can be used as a confirming technique. Regulatory Limit is based upon the sample matrix.

Analysis Performed By: L. Solebello

Date: 10/8/2009

CERTIFICATE OF ANALYSIS

Client: True Grit Consultants, Ltd.
1127 Barton Street
Thunder Bay ON P7B 5N3

Report Date: 10/9/2009
Project: McTavish Rec Centre DSS
Project No.: 09-040-06A

BULK SAMPLE ANALYSIS SUMMARY

Lab No.: 3754433 **Description / Location:** Black/Green/Tan Cove Base
Client No.: MR15b Storage; Room 15

<u>% Asbestos</u>	<u>Type</u>	<u>% Non-Asbestos Fibrous Material</u>	<u>Type</u>	<u>% Non-Fibrous Material</u>
None Detected	None Detected	85	Cellulose	15

Lab No.: 3754434 **Description / Location:** Black/Green/Tan Cove Base
Client No.: MR15c Storage; Room 15

<u>% Asbestos</u>	<u>Type</u>	<u>% Non-Asbestos Fibrous Material</u>	<u>Type</u>	<u>% Non-Fibrous Material</u>
None Detected	None Detected	85	Cellulose	15

Lab No.: 3754435 **Description / Location:** Green Rubber Mat
Client No.: MR16a Vestibule; Room 16

<u>% Asbestos</u>	<u>Type</u>	<u>% Non-Asbestos Fibrous Material</u>	<u>Type</u>	<u>% Non-Fibrous Material</u>
None Detected	None Detected	15	Cellulose	85

Lab No.: 3754436 **Description / Location:** Green Rubber Mat
Client No.: MR16b Vestibule; Room 16

<u>% Asbestos</u>	<u>Type</u>	<u>% Non-Asbestos Fibrous Material</u>	<u>Type</u>	<u>% Non-Fibrous Material</u>
None Detected	None Detected	15	Cellulose	85

NIST-NVLAP No. 101165-0

NY-DOH No. 11021

AIHA Lab No. 100188

*This confidential report relates only to those item(s) tested and does not represent an endorsement by NIST-NVLAP, AIHA or any agency of the U.S. government
This report shall not be reproduced except in full, without written approval of the laboratory.*

Analysis Method: EPA 600/R-93/116

Comments: (PC) Indicates Stratified Point Count Method performed. Method not performed unless stated. Quantification at <0.25% by volume is possible with this method. (PC-Trace) represents this limit of quantitation. (PC-Trace) means that asbestos was detected but is not quantifiable under the Point Counting regimen. Analysis includes all distinct separable layers in accordance with EPA 600 Method. If not reported or otherwise noted, layer is either not present or the client has specifically requested that it not be analyzed. Small asbestos fibers may be missed by PLM due to resolution limitations of the optical microscope. Therefore, negative PLM results cannot be guaranteed. Electron Microscopy can be used as a confirming technique. Regulatory Limit is based upon the sample matrix.

Analysis Performed By: L. Solcibello

Date: 10/8/2009

CERTIFICATE OF ANALYSIS

Client: True Grit Consultants, Ltd.
1127 Barton Street
Thunder Bay ON P7B 5N3

Report Date: 10/9/2009
Project: McTavish Rec Centre DSS
Project No.: 09-040-06A

BULK SAMPLE ANALYSIS SUMMARY

Lab No.: 3754437 **Description / Location:** Green Rubber Mat
Client No.: MR16c Vestibule; Room 16

<u>% Asbestos</u>	<u>Type</u>	<u>% Non-Asbestos Fibrous Material</u>	<u>Type</u>	<u>% Non-Fibrous Material</u>
None Detected	None Detected	15	Cellulose	85

Lab No.: 3754438 **Description / Location:** Brown Ceramic Tile
Client No.: MR17a Hallway; Room 17

<u>% Asbestos</u>	<u>Type</u>	<u>% Non-Asbestos Fibrous Material</u>	<u>Type</u>	<u>% Non-Fibrous Material</u>
None Detected	None Detected	None Detected	None Detected	100

Lab No.: 3754438 **Description / Location:** Tan Mastic **Layer No.:** 2
Client No.: MR17a Hallway; Room 17

<u>% Asbestos</u>	<u>Type</u>	<u>% Non-Asbestos Fibrous Material</u>	<u>Type</u>	<u>% Non-Fibrous Material</u>
None Detected	None Detected	None Detected	None Detected	100

NIST-NVLAP No. 101165-0

NY-DOH No. 11021

AIHA Lab No. 100188

*This confidential report relates only to those item(s) tested and does not represent an endorsement by NIST-NVLAP, AIHA or any agency of the U.S. government
This report shall not be reproduced except in full, without written approval of the laboratory.*

Analysis Method: EPA 600/R-93/116

Comments: (PC) Indicates Stratified Point Count Method performed. Method not performed unless stated. Quantification at <0.25% by volume is possible with this method. (PC-Trace) represents this limit of quantitation. (PC-Trace) means that asbestos was detected but is not quantifiable under the Point Counting regimen. Analysis includes all distinct separable layers in accordance with EPA 600 Method. If not reported or otherwise noted, layer is either not present or the client has specifically requested that it not be analyzed. Small asbestos fibers may be missed by PLM due to resolution limitations of the optical microscope. Therefore, negative PLM results cannot be guaranteed. Electron Microscopy can be used as a confirming technique. Regulatory Limit is based upon the sample matrix.

Analysis Performed By: L. Solebello

Date: 10/8/2009

CERTIFICATE OF ANALYSIS

Client: True Grit Consultants, Ltd.
1127 Barton Street
Thunder Bay ON P7B 5N3

Report Date: 10/9/2009
Project: McTavish Rec Centre DSS
Project No.: 09-040-06A

BULK SAMPLE ANALYSIS SUMMARY

Lab No.: 3754439	Description / Location: Brown Ceramic Tile			
Client No.: MR17b	Hallway; Room 17			
<u>% Asbestos</u>	<u>Type</u>	<u>% Non-Asbestos Fibrous Material</u>	<u>Type</u>	<u>% Non-Fibrous Material</u>
None Detected	None Detected	None Detected	None Detected	100

Lab No.: 3754439	Description / Location: Tan Mastic	Layer No.: 2		
Client No.: MR17b	Hallway; Room 17			
<u>% Asbestos</u>	<u>Type</u>	<u>% Non-Asbestos Fibrous Material</u>	<u>Type</u>	<u>% Non-Fibrous Material</u>
None Detected	None Detected	None Detected	None Detected	100

Lab No.: 3754439	Description / Location: Red Grout	Layer No.: 3		
Client No.: MR17b	Hallway; Room 17			
<u>% Asbestos</u>	<u>Type</u>	<u>% Non-Asbestos Fibrous Material</u>	<u>Type</u>	<u>% Non-Fibrous Material</u>
None Detected	None Detected	None Detected	None Detected	100

NIST-NVLAP No. 101165-0

NY-DOH No. 11021

AIHA Lab No. 100188

*This confidential report relates only to those item(s) tested and does not represent an endorsement by NIST-NVLAP, AIHA or any agency of the U.S. government
This report shall not be reproduced except in full, without written approval of the laboratory.*

Analysis Method: EPA 600/R-93/116

Comments: (PC) indicates Stratified Point Count Method performed. Method not performed unless stated. Quantification at <0.25% by volume is possible with this method. (PC-Trace) represents this limit of quantitation. (PC-Trace) means that asbestos was detected but is not quantifiable under the Point Counting regimen. Analysis includes all distinct separable layers in accordance with EPA 600 Method. If not reported or otherwise noted, layer is either not present or the client has specifically requested that it not be analyzed. Small asbestos fibers may be missed by PLM due to resolution limitations of the optical microscope. Therefore, negative PLM results cannot be guaranteed. Electron Microscopy can be used as a confirming technique. Regulatory Limit is based upon the sample matrix.

Analysis Performed By: L. Solebello

Date: 10/8/2009

CERTIFICATE OF ANALYSIS

Client: True Grit Consultants, Ltd.
1127 Barton Street
Thunder Bay ON P7B 5N3

Report Date: 10/9/2009
Project: McTavish Rec Centre DSS
Project No.: 09-040-06A

BULK SAMPLE ANALYSIS SUMMARY

Lab No.: 3754440 **Description / Location:** Brown Ceramic Tile
Client No.: MR17c Hallway, Room 17

<u>% Asbestos</u>	<u>Type</u>	<u>% Non-Asbestos Fibrous Material</u>	<u>Type</u>	<u>% Non-Fibrous Material</u>
None Detected	None Detected	None Detected	None Detected	100

Lab No.: 3754440 **Description / Location:** Tan Mastic
Client No.: MR17c Hallway, Room 17 **Layer No.:** 2

<u>% Asbestos</u>	<u>Type</u>	<u>% Non-Asbestos Fibrous Material</u>	<u>Type</u>	<u>% Non-Fibrous Material</u>
None Detected	None Detected	None Detected	None Detected	100

Lab No.: 3754441 **Description / Location:** Grey Insulation
Client No.: MR18a Furnace Room; Room 18

<u>% Asbestos</u>	<u>Type</u>	<u>% Non-Asbestos Fibrous Material</u>	<u>Type</u>	<u>% Non-Fibrous Material</u>
70	Chrysotile	None Detected	None Detected	30

Lab No.: 3754442 **Description / Location:** Sample Not Analyzed
Client No.: MR18b

<u>% Asbestos</u>	<u>Type</u>	<u>% Non-Asbestos Fibrous Material</u>	<u>Type</u>	<u>% Non-Fibrous Material</u>
Sample Not Analyzed		Sample Not Analyzed		

NIST-NVLAP No. 101165-0

NY-DOH No. 11021

AIHA Lab No. 100188

*This confidential report relates only to those item(s) tested and does not represent an endorsement by NIST-NVLAP, AIHA or any agency of the U.S. government
This report shall not be reproduced except in full, without written approval of the laboratory.*

Analysis Method: EPA 600/R-93/116

Comments: (PC) Indicates Stratified Point Count Method performed. Method not performed unless stated. Quantification at <0.25% by volume is possible with this method. (PC-Trace) represents this limit of quantitation. (PC-Trace) means that asbestos was detected but is not quantifiable under the Point Counting regimen. Analysis includes all distinct separable layers in accordance with EPA 600 Method. If not reported or otherwise noted, layer is either not present or the client has specifically requested that it not be analyzed. Small asbestos fibers may be missed by PLM due to resolution limitations of the optical microscope. Therefore, negative PLM results cannot be guaranteed. Electron Microscopy can be used as a confirming technique. Regulatory Limit is based upon the sample matrix.

Analysis Performed By: L. Solebello

Date: 10/8/2009

CERTIFICATE OF ANALYSIS

Client: True Grit Consultants, Ltd.
1127 Barton Street
Thunder Bay ON P7B 5N3

Report Date: 10/9/2009
Project: McTavish Rec Centre DSS
Project No.: 09-040-06A

BULK SAMPLE ANALYSIS SUMMARY

Lab No.: 3754443 **Description / Location:** Sample Not Analyzed

Client No.: MR18c

<u>% Asbestos</u>	<u>Type</u>	<u>% Non-Asbestos Fibrous Material</u>	<u>Type</u>	<u>% Non-Fibrous Material</u>
Sample Not Analyzed		Sample Not Analyzed		

Lab No.: 3754444 **Description / Location:** Grey/Black Shingle
Client No.: MR20a Roof, Older Side, Room 19

<u>% Asbestos</u>	<u>Type</u>	<u>% Non-Asbestos Fibrous Material</u>	<u>Type</u>	<u>% Non-Fibrous Material</u>
None Detected	None Detected	40	Cellulose	60

Lab No.: 3754445 **Description / Location:** Grey/Black Shingle
Client No.: MR20b Roof, Older Side, Room 19

<u>% Asbestos</u>	<u>Type</u>	<u>% Non-Asbestos Fibrous Material</u>	<u>Type</u>	<u>% Non-Fibrous Material</u>
None Detected	None Detected	40	Cellulose	60

Lab No.: 3754446 **Description / Location:** Tan/Black Shingle
Client No.: MR20c Roof, Older Side, Room 19

<u>% Asbestos</u>	<u>Type</u>	<u>% Non-Asbestos Fibrous Material</u>	<u>Type</u>	<u>% Non-Fibrous Material</u>
None Detected	None Detected	40	Cellulose	60

NIST-NVLAP No. 101165-0

NY-DOH No. 11021

AIHA Lab No. 100188

*This confidential report relates only to those item(s) tested and does not represent an endorsement by NIST-NVLAP, AIHA or any agency of the U.S. government
This report shall not be reproduced except in full, without written approval of the laboratory.*

Analysis Method: EPA 600/R-93/116

Comments: (PC) Indicates Stratified Point Count Method performed. Method not performed unless stated. Quantification at <0.25% by volume is possible with this method. (PC-Trace) represents this limit of quantitation. (PC-Trace) means that asbestos was detected but is not quantifiable under the Point Counting regimen. Analysis includes all distinct separable layers in accordance with EPA 600 Method. If not reported or otherwise noted, layer is either not present or the client has specifically requested that it not be analyzed. Small asbestos fibers may be missed by PLM due to resolution limitations of the optical microscope. Therefore, negative PLM results cannot be guaranteed. Electron Microscopy can be used as a confirming technique. Regulatory Limit is based upon the sample matrix.

Analysis Performed By: L. Solebello

Date: 10/8/2009

CERTIFICATE OF ANALYSIS

Client: True Grit Consultants, Ltd.
1127 Barton Street
Thunder Bay ON P7B 5N3

Report Date: 10/9/2009
Project: McTavish Rec Centre DSS
Project No.: 09-040-06A

BULK SAMPLE ANALYSIS SUMMARY

Lab No.: 3754447	Description / Location: Green/Black Shingle		
Client No.: MR21a	Roof, Newer Side; Room 19		
<u>% Asbestos</u>	<u>Type</u>	<u>% Non-Asbestos Fibrous Material</u>	<u>Type</u>
None Detected	None Detected	40	Cellulose
			<u>% Non-Fibrous Material</u>
			60

Lab No.: 3754448	Description / Location: Green/Black Shingle		
Client No.: MR21b	Roof, Newer Side; Room 19		
<u>% Asbestos</u>	<u>Type</u>	<u>% Non-Asbestos Fibrous Material</u>	<u>Type</u>
None Detected	None Detected	40	Cellulose
			<u>% Non-Fibrous Material</u>
			60

Lab No.: 3754449	Description / Location: Green/Black Shingle		
Client No.: MR21c	Roof, Newer Side; Room 19		
<u>% Asbestos</u>	<u>Type</u>	<u>% Non-Asbestos Fibrous Material</u>	<u>Type</u>
None Detected	None Detected	40	Cellulose
			<u>% Non-Fibrous Material</u>
			60

NIST-NVLAP No. 101165-0

NY-DOH No. 11021

AIHA Lab No. 100188

*This confidential report relates only to those item(s) tested and does not represent an endorsement by NIST-NVLAP, AIHA or any agency of the U.S. government
This report shall not be reproduced except in full, without written approval of the laboratory.*

Analysis Method: EPA 600/R-93/116

Comments: (PC) Indicates Stratified Point Count Method performed. Method not performed unless stated. Quantification at <0.25% by volume is possible with this method. (PC-Trace) represents this limit of quantitation. (PC-Trace) means that asbestos was detected but is not quantifiable under the Point Counting regimen. Analysis includes all distinct separable layers in accordance with EPA 600 Method. If not reported or otherwise noted, layer is either not present or the client has specifically requested that it not be analyzed. Small asbestos fibers may be missed by PLM due to resolution limitations of the optical microscope. Therefore, negative PLM results cannot be guaranteed. Electron Microscopy can be used as a confirming technique. Regulatory Limit is based upon the sample matrix.

Analysis Performed By: L. Solebello

Date: 10/8/2009



Chain of Custody / Sample Log Bulk Asbestos

9000 Commerce Parkway
Suite B
Mt. Laurel, NJ 08054
Toll Free: 877 428-4285
info@iatl.com
www.iatl.com

Client: True Grit Consulting Ltd.
1123 Boston St.
Thunder Bay, ON P7B 5N3

Project Name: McTavish Rec. Centre D55
Project No.: 09-040-06A

Office Phone: (807) 626-5640 EXT 233
Cell Phone: _____
FAX / Email 1: mgauthier@tgc.ca

Contact 1: Melanie Gauthier
Contact 2: _____
FAX / Email 2: _____

Special Instructions: * use positive stop method for all samples in a series.

Matrix:

Air
 Water
 Soil
 Paint
 Bulk
 Surface Dust / Wipe
 Other

Analysis Method:

PLM : Bulk Asbestos Building Materials EPA 600 / R 93-116

PLM : Point Counting
 PC : via ELAP 198.1
 PC : 400 Points
 PC : 800 Points *
 PC : other _____ Points *

PLM : Analyze Until Positive (Positive Stop)
 AUP : by Homogenous Area as Noted
 AUP : by Material Type as Noted

PLM : Gravimetric Reduction
 PLM : NOB via 198.6
 PLM : Friable via EPA 600 2.3
 If <1% by PLM, to TEM via 198.4 *
 If <1% by PLM, Hold for Instructions

PLM : Non-Building Material *, **(Dust, Wipe, Tape, Soil)
 Soil or Vermiculite Analysis *, **

PLM: Instructions for Multi-Layered Samples
 Analyze and Report All Separable Layers per EPA 600
 Report Composite for Drywall Systems per NESHAP
 Report All Layers and Composite Where Applicable
 Only Analyze and Report Specifically Noted Layer

* Additional charge and turnaround may be required. ** Alternative Method (ex: EPA 600/R-04/004) may be recommended by Laboratory.

Turnaround Time:

Preliminary Results Requested By... _____

Verbals FAX Email

_____ date / time

10 Day 5 Day 3 Day 2 Day 1 Day* 12 Hour** 6 Hour** RUSH**

* End of next business day unless otherwise specified.

** Matrix Dependent. Please notify the lab before shipping.

Sample Numbers:

Client #(s): MR2A - MR2C

iATL#(s): _____ Total: _____

(start) (end) (start) (end)
Please use your sample log to supply sampling information (ex. Volumes, areas, descriptions, locations, etc.) or download forms at iatl.com

Chain of Custody:

Relinquished (Name / Organization): Melanie Gauthier / TGC
Received (Name / iATL): _____
Sample Login (Name / iATL): 17-015709
Sample Prep (Name / iATL): _____
Analysis (Name(s) / iATL): ES
QA/QC Review (Name / iATL): _____
Archived / Released: _____ QA/QC InterLAB Use: _____

Date: Sept 30, 2009 Time: 5:00pm
Date: _____ Time: _____
Date: _____ Time: _____
Date: _____ Time: _____
Date: 10/8/09 Time: _____
Date: Oct 1 - 9 2009 Time: _____
Date: _____ Time: _____

IATL - By _____



Chain of Custody / Sample Log

Bulk Asbestos

9000 Commerce Parkway
Suite B
Mt. Laurel, NJ 08054
Toll Free: 877 428-4285
info@iatl.com
www.iatl.com

LS 10/8/09

Client: True Grit Consulting Ltd.

Project Name: McTavish Rec. Centre DSS
Project No.: CA-040-06A

Sampling Date: September 30, 2009.

Client Sample ID:	iATL Sample ID:	Sample Description / Location	Notes
MR2a	3754405	Joint compound / Basement ^{white} basement (South)	Room 2
MR2b	3754406	Joint Compound / Lounge (white)	Room 6
MR2c	3754407	Joint compound / main rec. room (white)	Room 9
MR3a	3754408	12" x 12" floor tile / washroom ^(brown, yellow cream)	Room 4
MR3b	3754409	"	"
MR3c	3754410	"	"
MR5a	3754411	Spray on ceiling / Hallway ^{white}	Room 7.
MR5b	3754412	"	"
MR5c	3754413	"	"
MR6a	3754414	white 12" x 12" floor tile / main rec. room	Room 9
MR6b	3754415	"	"
MR6c	3754416	"	"
MR7a	3754417	Grey parging / main rec. room	Room 9
MR7b	3754418	"	"
MR7c	3754419	Grey parging / Hallway	Room 17
MR8a	3754420	Counter tile / window sills / main rec. room	Room 9
MR8b	3754421	"	"
MR8c	3754422	"	"
MR11a	3754423	9" x 9" Floor tile / Tuck shop. (green)	Room 11
MR11b	3754424	"	"
MR11c	3754425	"	"
MR12a	3754426	9" x 9" Floor tile / Tuck shop. (white)	Room 11
MR12b	3754427	"	"
MR12c	3754428	"	"
MR13a	3754429	Rubber baseboard mastic / Tuck shop. (brown)	Room 11
MR13b	3754430	"	"
MR13c	3754431	"	"
MR15a	3754432	chalkboard / Storage ^(cream/black)	Room 15



Chain of Custody / Sample Log

Bulk Asbestos

9000 Commerce Parkway
Suite B
Mt. Laurel, NJ 08054
Toll Free: 877 428-4285
info@iatl.com
www.iatl.com

Client: True Grit Consulting Ltd.

vs 10/8/09

Project Name: McTavish Rec. Centre DSS
Project No.: 09-040-06A

Client Sample ID:	IATL Sample ID:	Sample Description / Location	Notes
MR15b	3754433	chalk board / storage (cream/blade).	Room 15
MR15c	3754434	"	"
MR16a	3754435	Rubber mat / Vestibule (Forest green)	Room 16
MR16b	3754436	"	
MR16c	3754437	"	
MR17a	3754438	Ceramic tile / Hallway. (brown).	Room 17
MR17b	3754439	"	"
MR17c	3754440	"	"
MR18a	3754441	Pipe wrap / Furnace Room (white).	Room 18
MR18b	3754442	"	
MR18c	3754443	"	
MR20a	3754444	Shingles / roof / older side (black/brown)	Room 19
MR20b	3754445	"	
MR20c	3754446	"	
MR21a	3754447	Shingles / roof / newer side (black/grey)	Room 19
MR21b	3754448	"	
MR21c	3754449	"	

do not
analyze
1500

Please Make Additional Copies As Needed

